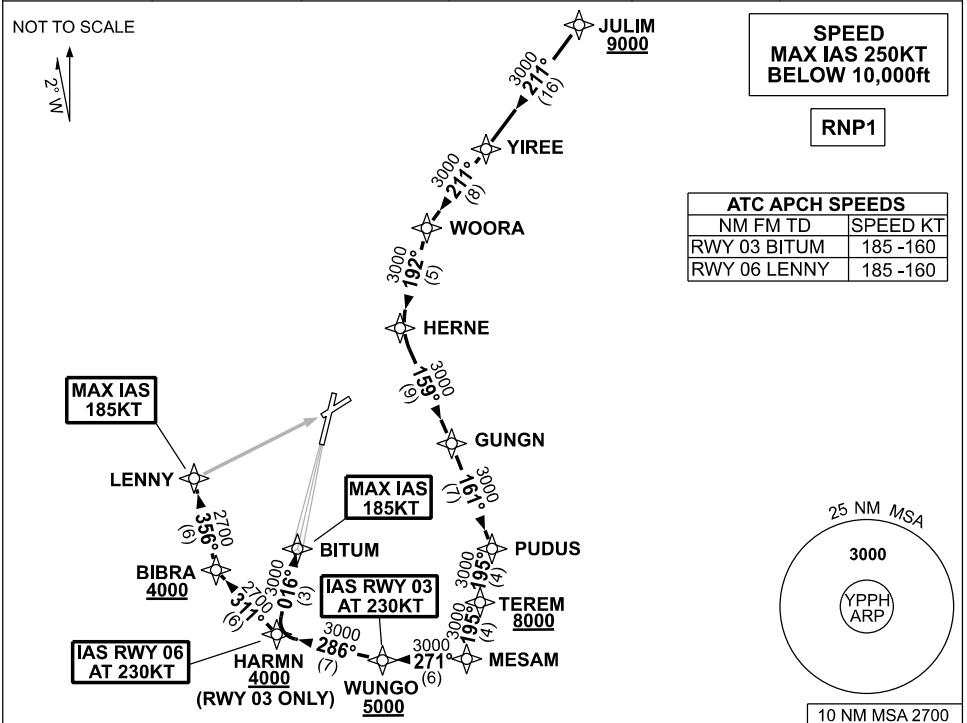


**STANDARD INSTRUMENT ARRIVAL (STAR)
JULIM EIGHT ALPHA ARRIVALS (JET) (RNAV) RWY 03/06
PERTH, WA (YPPH)**

09 JUL 2026

ATIS 113.7 123.8	APP 123.6 132.95	TWR 127.4	SMC E of RWY 03/21 122.2 W of RWY 03/21 121.7	Bearings are Magnetic Elevations in FEET AMSL
---------------------	---------------------	--------------	---	--



JULIM EIGHT ALPHA ARRIVALS

RWY 03:

Cross JULIM AT or ABV 9000ft

- From JULIM track 211° to YIREE
- Track 211° to WOORA
- Turn LEFT track 192° to HERNE
- Turn LEFT track 159° to GUNGN
- Turn RIGHT track 161° to PUDUS
- Turn RIGHT track 195° to TEREM

Cross TEREM AT or ABV 8000ft

- Track 195° to MESAM
 - Turn RIGHT track 271° to WUNGO
- Cross** WUNGO AT or ABV 5000ft
IAS AT 230KT from WUNGO

- Turn RIGHT, track 286° to HARMN
- **Cross** HARMN AT or ABV 4000ft
- Turn RIGHT, track 016° to BITUM for ILS, RNP Z or LOC RWY 03 APPROACH
MAX IAS 185KT from BITUM.

RWY 06:

Cross JULIM AT or ABV 9000ft

- From JULIM track 211° to YIREE
- Track 211° to WOORA
- Turn LEFT track 192° to HERNE
- Turn LEFT track 159° to GUNGN
- Turn RIGHT track 161° to PUDUS
- Turn RIGHT track 195° to TEREM

Cross TEREM AT or ABV 8000ft

- Track 195° to MESAM
- Turn RIGHT track 271° to WUNGO

Cross WUNGO AT or ABV 5000ft

- Turn RIGHT track 286° to HARMN
- **IAS AT 230KT** from HARMN
- Turn RIGHT track 311° to BIBRA
- **Cross** BIBRA AT or ABV 4000ft
- Turn RIGHT track 356° to LENNY for RNP or VOR RWY 06 APPROACH
MAX IAS 185KT from LENNY.

COMMUNICATIONS FAILURE: PROCEDURE IN IMC

- Squawk 7600, comply with vertical navigation requirements, but not below MSA.
- Track via the latest STAR clearance to the nominated runway, then fly the most suitable approach in accordance with ERS A EMERG Section 1.5.

Changes: FROM SUP H09/26.

PPHSR04-187