

**STANDARD INSTRUMENT ARRIVAL (STAR)
SAPKO FOUR VICTOR ARRIVALS (NON-JET) (RNAV)
PERTH, WA (YPPH)**

09 JUL 2026

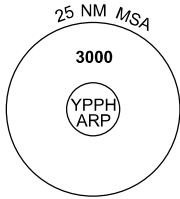
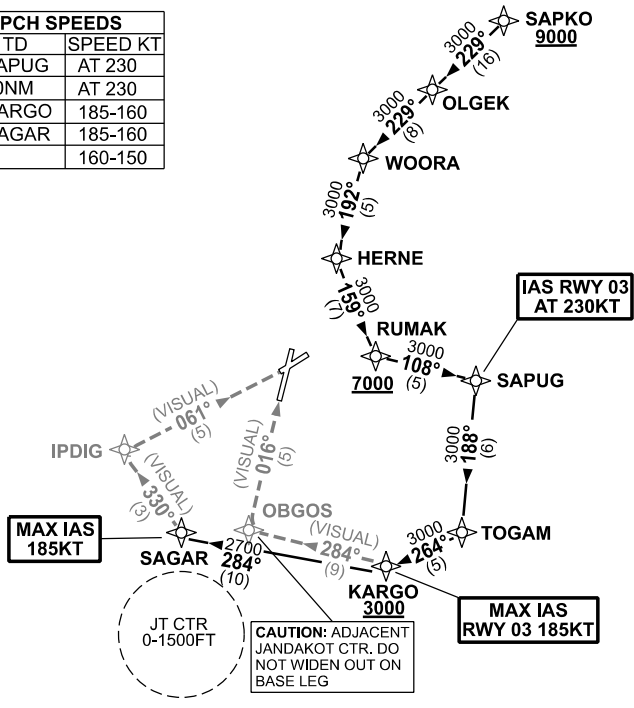
ATIS 113.7 123.8	APP 123.6 132.95	TWR 127.4	SMC E of RWY 03/21 122.2 W of RWY 03/21 121.7	Bearings are Magnetic Elevations in FEET AMSL
---------------------	---------------------	--------------	---	--

ATC APCH SPEEDS	
NM FM TD	SPEED KT
RWY 03 SAPUG	AT 230
RWY 06 20NM	AT 230
RWY 03 KARGO	185-160
RWY 06 SAGAR	185-160
5	160-150

**SPEED
MAX IAS 250KT
BELOW 10,000ft**

RNP1

NOT TO SCALE



10 NM MSA 2700

SAPKO FOUR ARRIVALS

- Cross** SAPKO AT or ABV 9000ft
 - From SAPKO track 229° to OLGEK
 - Track 229° to WOORA
 - Turn LEFT track 192° to HERNE
 - Turn LEFT track 159° to RUMAK
- Cross** RUMAK AT or ABV 7000ft
 - Turn LEFT track 108° to SAPUG
- IAS** RWY 03 AT 230KT from SAPUG
 - Turn RIGHT track 188° to TOGAM
 - Turn RIGHT track 264° to KARGO
- Cross** KARGO AT or ABV 3000ft
MAX IAS RWY 03 185KT from KARGO.

RWY 03 VICTOR: From KARGO
Turn RIGHT track 284° VISUAL to OBGOS for VISUAL final RWY 03

RWY 06 VICTOR: From KARGO turn RIGHT track 284° to SAGAR
MAX IAS 185KT from SAGAR
Turn RIGHT track 330° VISUAL to IPDIG for VISUAL final RWY 06

COMMUNICATIONS FAILURE: PROCEDURE IN IMC

- Squawk 7600, comply with vertical navigation requirements, but not below MSA.
- Track via the latest STAR clearance to the nominated runway, then fly the most suitable approach in accordance with ERS A EMERG Section 1.5.