

**STANDARD INSTRUMENT ARRIVAL (STAR)
LAVEX THREE ALPHA ARRIVALS (NON-JET) (RNAV) RWY 03/06
PERTH, WA (YPPH)**

09 JUL 2026

ATIS 113.7 123.8	APP 123.6	TWR 127.4	SMC E of RWY 03/21 122.2 W of RWY 03/21 121.7	Bearings are Magnetic Elevations in FEET AMSL
---------------------	--------------	--------------	---	--

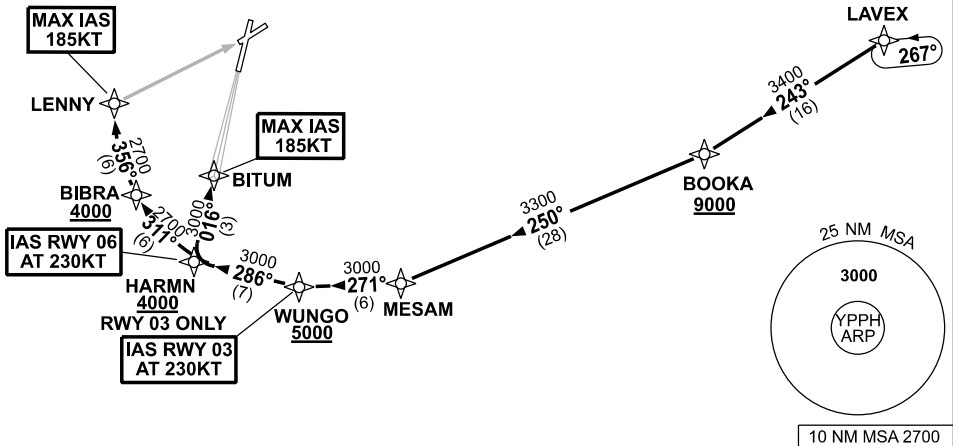
NOT TO SCALE



ATC APCH SPEEDS		
NM	FM TD	SPEED KT
RWY 03	BITUM	185 -160
RWY 06	LENNY	185 -160

**SPEED
MAX IAS 250KT
BELOW 10,000ft**

RNP1



LAVEX THREE ALPHA ARRIVALS

RWY 03:

- From LAVEX track 243° to BOOKA
Cross BOOKA AT or ABV 9000ft
- Turn RIGHT track 250° to MESAM
- Turn RIGHT track 271° to WUNGO
Cross WUNGO AT or ABV 5000ft
IAS AT 230KT from WUNGO
- Turn RIGHT track 286° to HARMN
Cross HARMN AT or ABV 4000ft
- Turn RIGHT track 016° to BITUM
for ILS, RNP Z or
LOC RWY 03 APPROACH
MAX IAS 185KT from BITUM.

RWY 06:

- From LAVEX track 243° to BOOKA
Cross BOOKA AT or ABV 9000ft
- Turn RIGHT track 250° to MESAM
- Turn RIGHT track 271° to WUNGO
Cross WUNGO AT or ABV 5000ft
- Turn RIGHT track 286° to HARMN
IAS AT 230KT from HARMN
- Turn RIGHT track 311° to BIBRA
Cross BIBRA AT or ABV 4000ft
- Turn RIGHT track 356° to LENNY
for RNP or
VOR RWY 06 APPROACH
MAX IAS 185KT from LENNY.

COMMUNICATIONS FAILURE: PROCEDURE IN IMC

- Squawk 7600, comply with vertical navigation requirements, but not below MSA.
- Track via the latest STAR clearance to the nominated runway, then fly the most suitable approach in accordance with ERS A EMERG Section 1.5.

Changes: FROM SUP H09/26.

PPHSR01-187