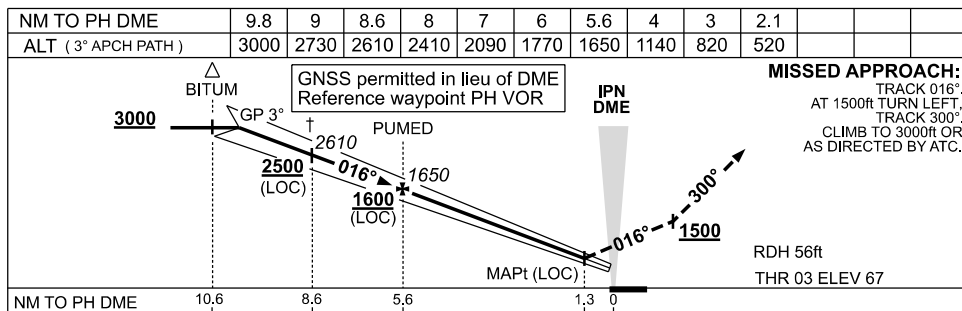
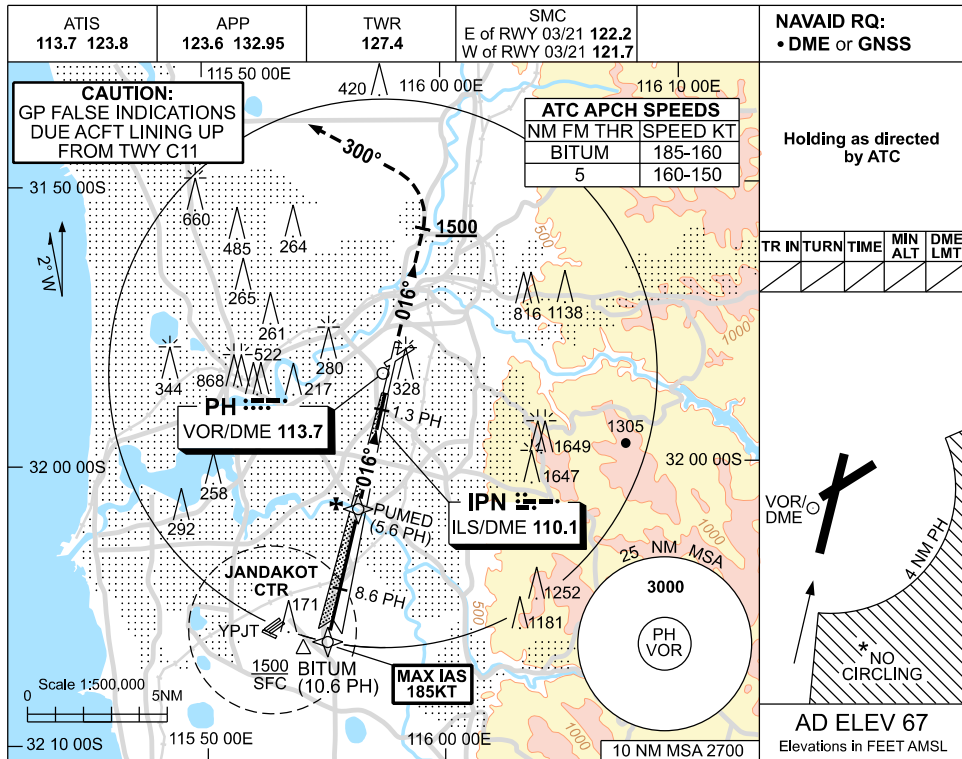


USE QNH

ILS-Y or LOC-Y RWY 03  
PERTH, WA (YPPH)

09 JUL 2026



CATEGORY	A			B		C		D/DL
S-I ILS	270 (203)			0.8		550 RVR		
S-I LOC	520 (453-1.7)							
CIRCLING *	760 (693-2.4)			1440 (1373-4.0)		1440 (1373-5.0)		
ALTERNATE ‡	(1193-4.4)			(1873-6.0)		(1873-7.0)		

**NOTES**

1. MAX IAS:  
BITUM : 185KT.
- \* 2. NO CIRCLING CAT C&D  
ACFT BEYOND 4NM  
PH E OF RWY 03 / 21  
AND 06 / 24.
- ‡ 3. ACFT MAY BE RADAR  
VECTORED TO FNA.
- ‡ 4. SPECIAL ALTN MNM  
700/2.5KM.
5. COLOUR: SEE  
SPEC NOTICES.

Changes: CAUTION BOX, Editorial.

PPH104-187