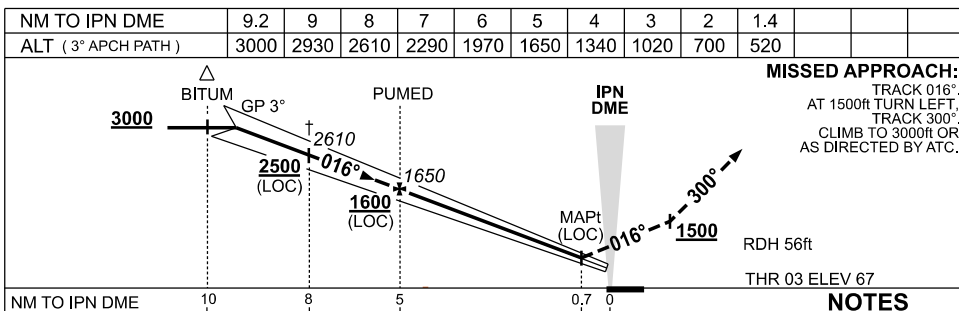
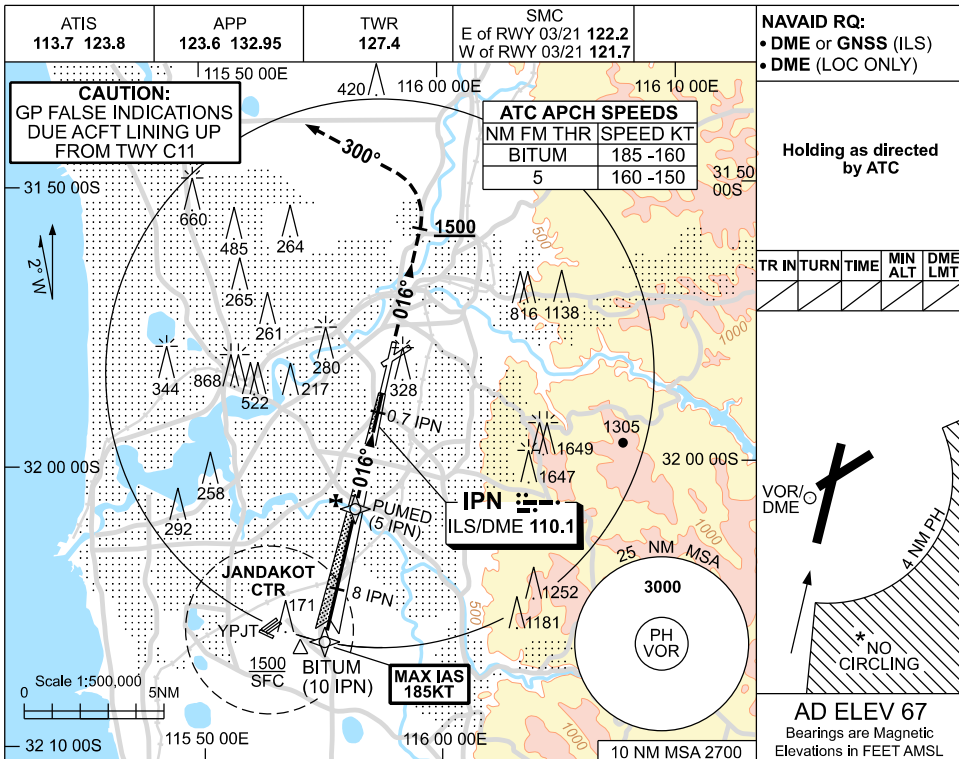


USE QNH

ILS-Z or LOC-Z RWY 03  
PERTH, WA (YPPH)

09 JUL 2026



CATEGORY	A	B	C	D/DL
S-I ILS SA CAT I #	RA 148 DA 217 (150) 450 RVR			
S-I ILS	270 (203) 0.8 550 RVR			
S-I LOC	520 (453-1.7)			
CIRCLING *	760 (693-2.4)		1440 (1373-4.0)	1440 (1373-5.0)
ALTERNATE ‡	(1193-4.4)		(1873-6.0)	(1873-7.0)

**NOTES**

- MAX IAS: BITUM : 185KT.
- SPECIAL AIRCREW & ACFT CERTIFICATION REQUIRED
- NO CIRCLING CAT C&D ACFT BEYOND 4NM PH E OF RWY 03 / 21 AND 06 / 24.
- ACFT MAY BE RADAR VECTORED TO FNA.
- SPECIAL ALTN MNM 700/2.5KM.
- COLOUR: SEE SPEC NOTICES.

Changes: CAUTION NOTE, Editorial.

PPH103-187