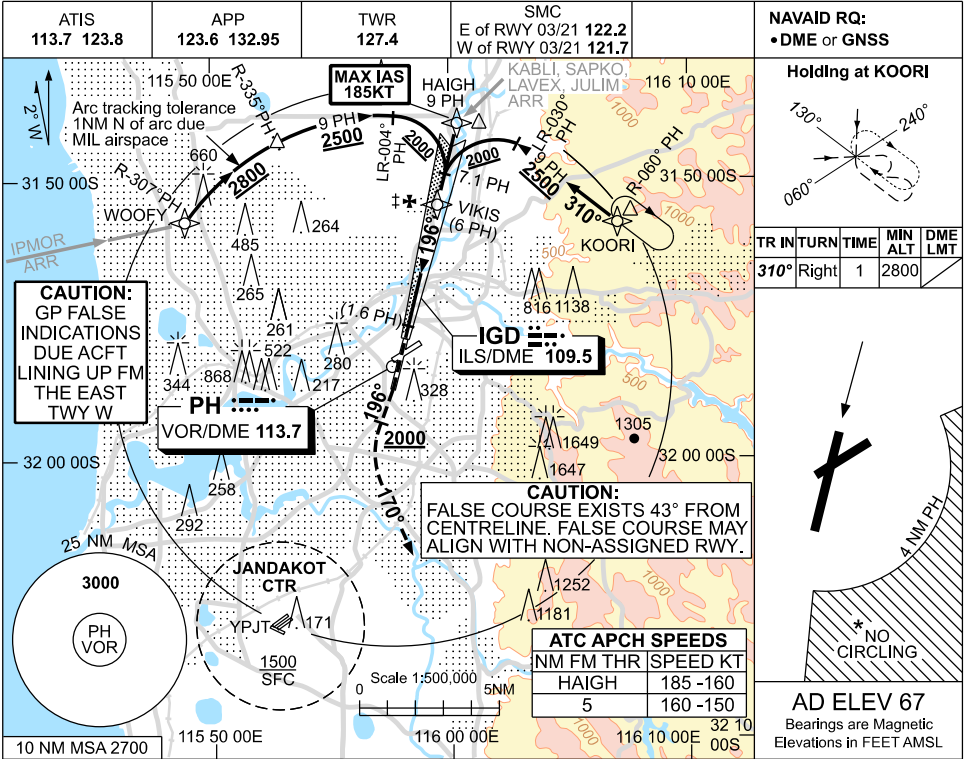


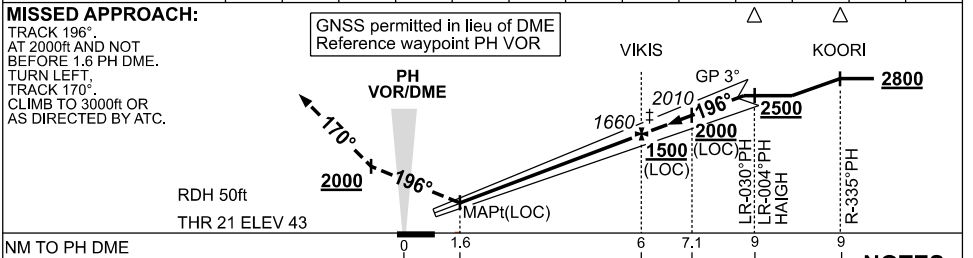
USE QNH

ILS-Y or LOC-Y RWY 21  
PERTH, WA (YPPH)

09 JUL 2026



NM TO PH DME	2.5	3	4	5	6	7	7.1	8	8.6				
ALT (3° APCH PATH)	550	710	1030	1340	1660	1980	2010	2300	2500				



NM TO PH DME													
NM TO THR 21													

**NOTES**

1. MAX IAS: HAIGH : 185KT.
- \*2. NO CIRCLING CAT C&D ACFT BEYOND 4 DME PHE OF RWY 03 / 21 AND 06 / 24.
- ‡3. ACFT MAY BE RADAR VECTORED TO FNA.
- \*4. SPECIAL ALTN MNM 700/2.5KM.
5. COLOUR: SEE SPEC NOTICES.

CATEGORY	A	B	C	D/DL
S-I ILS		250 (207) 0.8	550 RVR	
S-I LOC		550 (507-2.0)		
CIRCLING *	760 (693-2.4)		1440 (1373-4.0)	1440 (1373-5.0)
ALTERNATE ‡	(1193-4.4)		(1873-6.0)	(1873-7.0)

Changes: CAUTION NOTE, Editorial.

PPHII01-187