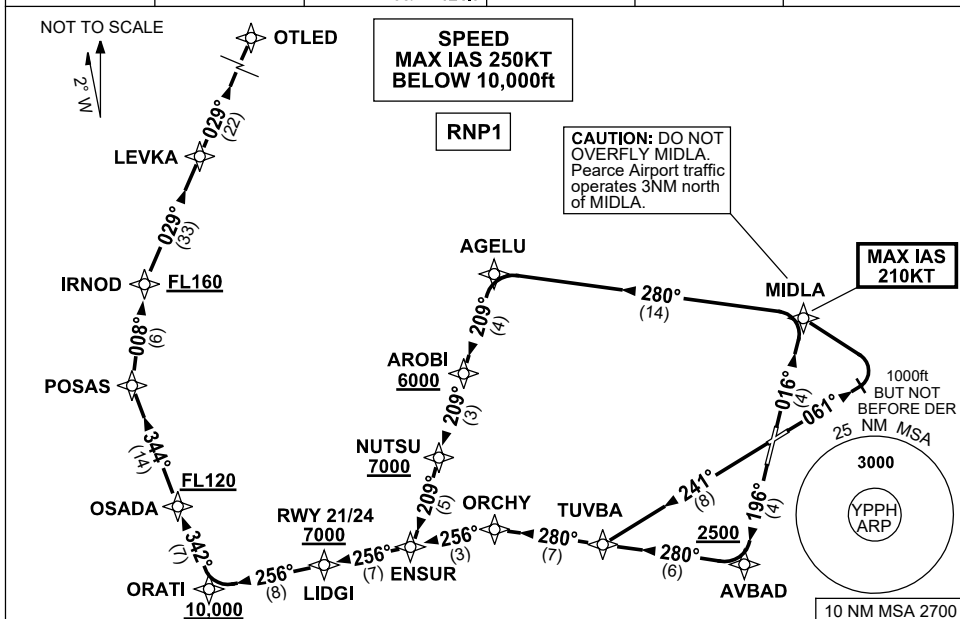


# STANDARD INSTRUMENT DEPARTURES (SID) OTLED FIVE (NON-JET) (RNAV) PERTH, WA (YPPH)

21 MAR 2024

ATIS 113.7 123.8	ACD 118.55	SMC E of RWY 03/21 122.2 W of RWY 03/21 121.7	TWR 127.4	DEP 118.7	Bearings are Magnetic Elevations in FEET AMSL
---------------------	---------------	---	--------------	--------------	--



## OTLED FIVE DEPARTURE

### RWY 03

GRAD 3.3% (4.3% to FL120)  
**MAX IAS 210KT UNTIL MIDLA**

- Track 016° to MIDLA

### RWY 06

GRAD 4% to 2800ft (4.3% to FL120)  
**MAX IAS 210KT UNTIL MIDLA**

- Track 061°
- AT 1000ft but not before DER, turn LEFT
- Track DCT to MIDLA

### From MIDLA

- Turn LEFT, track 280° to AGELU
- Turn LEFT, track 209° to AROBI  
**Cross AROBI AT or ABV 6000ft**  
(RQ GRAD to AROBI is 5.0%)
- Track 209° to NUTSU  
**Cross NUTSU AT or ABV 7000ft**  
(RQ GRAD to NUTSU is 5.0%)
- Track 209° to ENSUR
- Turn RIGHT, track 256° to LIDGI
- Track 256° to ORATI,  
**Cross ORATI AT or ABV 10,000ft**
- Turn RIGHT, track 342° to OSADA  
**Cross OSADA AT or ABV FL120**
- Turn RIGHT, track 344° to POSAS
- Turn RIGHT, track 008° to IRNOD,  
**Cross IRNOD AT or ABV FL160**
- Turn RIGHT, track 029° to LEVKA
- Track 029° to OTLED, then as cleared

### RWY 21

GRAD 3.7% to 2800ft (10.6% to 2500ft, then 4.2% to FL120)

- Track 196° to AVBAD  
**Cross AVBAD AT or ABV 2500ft**
- Turn RIGHT, track 280° to TUVBA

### RWY 24

GRAD 3.7% to 2800ft (5.3% to FL120)

- Track 241° to TUVBA

### From TUVBA

- Track 280° to ORCHY
- Turn LEFT, track 256° to ENSUR
- Track 256° to LIDGI  
**Cross LIDGI AT or ABV 7,000ft**
- Track 256° to ORATI  
**Cross ORATI AT or ABV 10,000ft**
- Turn RIGHT, track 342° to OSADA  
**Cross OSADA AT or ABV FL120**
- Turn RIGHT, track 344° to POSAS
- Turn RIGHT, track 008° to IRNOD  
**Cross IRNOD AT or ABV FL160**
- Turn RIGHT, track 029° to LEVKA  
then as cleared