

**REPOK ONE (NON-JET) (RNAV)
PERTH, WA (YPPH)**

13 JUN 2024

ATIS 113.7 123.8	ACD 118.55	SMC E of RWY 03/21 122.2 W of RWY 03/21 121.7	TWR 127.4	DEP 118.7	Bearings are Magnetic Elevations in FEET AMSL
---------------------	---------------	---	--------------	--------------	--

NOT TO SCALE

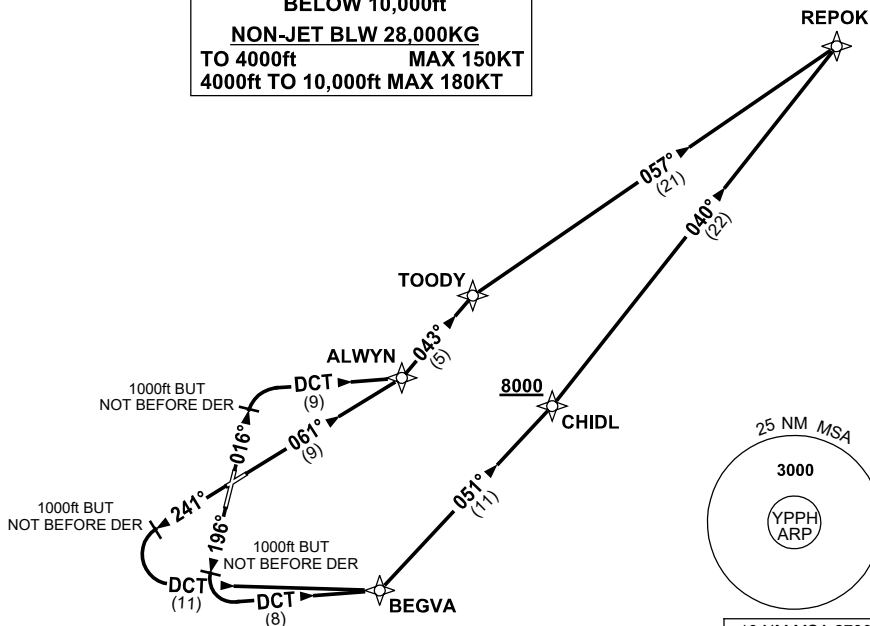
RNP1

SPEED
MAX IAS 250KT
BELOW 10,000ft

NON-JET BLW 28,000KG

TO 4000ft	MAX 150KT
4000ft TO 10,000ft	MAX 180KT

REPOK



10 NM MSA 2700

REPOK ONE DEPARTURE (NON-JET)

GRAD 4.0% to 2800ft then 3.3%

RWY 03

- Track 016°
- AT 1000ft but not before DER
- Turn RIGHT, track DCT to ALWYN
- Turn LEFT, track 043° to TOODY
- Turn RIGHT, track 057° to REPOK, then as cleared

RWY 06

- Track 061° to ALWYN
- Turn LEFT, track 043° to TOODY
- Turn RIGHT, track 057° to REPOK,
then as cleared

RWY 21

- Track 196°
- AT 1000ft but not before DER
- Turn LEFT, track DCT to BEGVA

RWY 24

- Track 241°
- AT 1000ft but not before DER
- Turn LEFT, track DCT to BEGVA

From BEGVA

- Turn LEFT, track 051° to CHIDL
Cross CHIDL AT or ABV 8000ft
- Turn LEFT, track 040° to REPOK,
then as cleared

Changes: REPOK REPLACES RAVON, BEGVA REPLACES SOKAL, VALIDITY INDICATOR.

PPHDP12-179