

**5 SEP 2024**

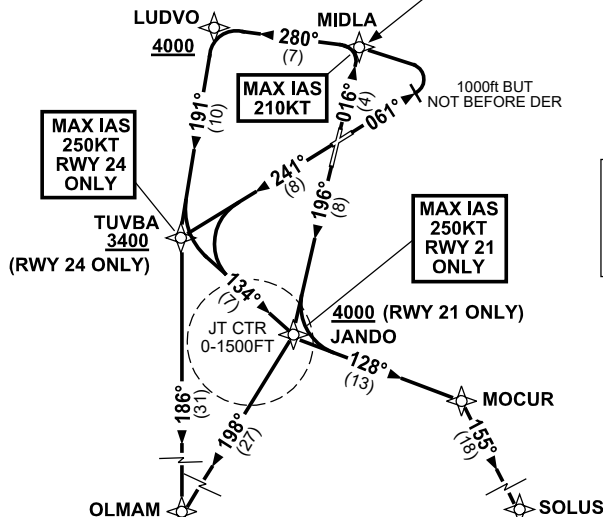
NOT TO SCALE



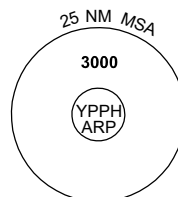
**CAUTION: DO NOT OVERFLY MIDLA.** Pearce Airport traffic operates 3NM north of MIDLA.

**SPEED**  
**MAX IAS 250KT**  
**BELOW 10.000ft**

RNP1



RWY 03: GRAD 3.3%  
RWY 06: GRAD 4.0% to 2800ft  
RWY 21: GRAD 3.7% to 2800ft  
(7.9% to 4000ft)  
RWY 24: GRAD 3.7% to 2800ft  
(6.6% to 3400ft)



10 NM MSA 2700

## RWY 03

**MAX IAS 210KT until MIDLA**

- Track 016° to MIDLA
- Turn LEFT, track 280° to LUDVO
- **Cross** LUDVO AT or ABV 4000ft
- Turn LEFT, track 191° to TUVBA
- Turn LEFT, track 186° to OLMAM

## RWY 06

**MAX IAS 210KT until MIDLA**

- Track 061°
- AT 1000ft but not before DER
- Turn LEFT, track DCT to MIDLA
- Turn LEFT, track 280° to LUDVO
- **Cross** LUDVO AT or ABV 4000ft
- Turn LEFT, track 191° to TUVBA
- Turn LEFT, track 186° to OLMAM

## RWY 21

**MAX IAS 250KT until JANDO**

- Track 196° to JANDO
- **Cross** JANDO AT or ABV 4000ft
- Track 198° to OLMAM

## RWY 24

**MAX IAS 250KT until TUVBA**

- Track 241° to TUVBA
- Cross TUVBA AT or ABV 3400ft
- Turn LEFT, track 186° to OLMAM

## RWY 03

**MAX IAS 210KT until MIDLA**

- Turn LEFT, track 280° to LUDVO
- **Cross** LUDVO AT or ABV 4000ft
- Turn LEFT, track 191° to TUVBA
- Turn LEFT, track 134° to JANDO

## RWY 06

**MAX IAS 210KT** until MIDLA

- Track 061°
- AT 1000ft but not before DER
- Turn LEFT, track DCT to MIDLA
- Turn LEFT, track 280° to LUDVO
- **Cross** LUDVO AT or ABV 4000ft
- Turn LEFT, track 191° to TUVBA
- Turn LEFT, track 134° to JANDO

## RWY 21

**MAX IAS 250KT until JANDO**

- Track 196° to JANDO  
**Cross** JANDO AT or ABV 4000ft

## RWY 24

**MAX IAS 250KT until TUVBA**

- Track 241° to TUVBA  
**Cross** TUVBA AT or ABV 3400ft
- Turn **LEFT**, track 134° to JANDO

From JANDO

- Track  $128^\circ$  to MOCUR
- Turn RIGHT, track  $155^\circ$  to SOLUS