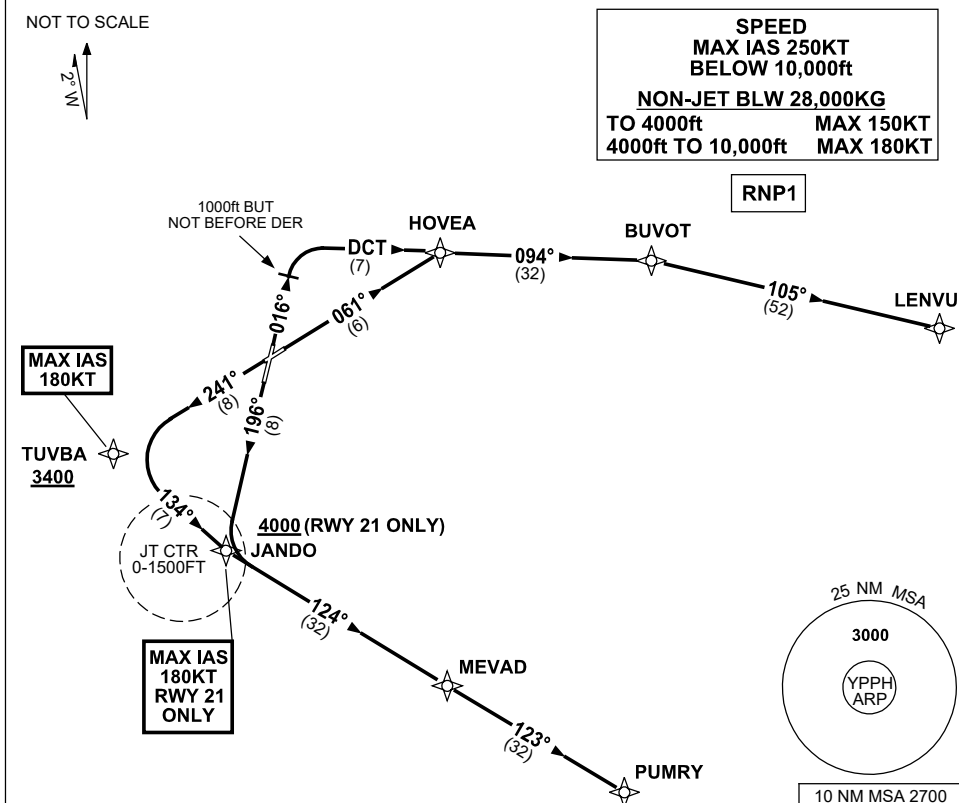


# STANDARD INSTRUMENT DEPARTURES (SID) LENVU ONE, PUMRY SEVEN (NON-JET) (RNAV) PERTH, WA (YPPH)

5 SEP 2024

ATIS 113.7 123.8	ACD 118.55	SMC E of RWY 03/21 122.2 W of RWY 03/21 121.7	TWR 127.4	DEP 118.7	Bearings are Magnetic Elevations in FEET AMSL
---------------------	---------------	---	--------------	--------------	--



## LENVU ONE DEPARTURE (NON-JET)

### RWY 03

- GRAD 4.0% to 2800ft THEN 3.3%
- Track 016°
- AT 1000ft but not before DER  
Turn RIGHT, track DCT to HOVEA
- Track 094° to BUVOT
- Turn RIGHT, track 105° to LENVU, then as cleared

### RWY 06

- GRAD 4.0% to 2800ft THEN 3.3%
- Track 061° to HOVEA
- Turn RIGHT, track 094° to BUVOT
- Turn RIGHT, track 105° to LENVU, then as cleared

## PUMRY SEVEN DEPARTURE (NON-JET)

### RWY 21

- GRAD 4.0% to 2800ft  
THEN 3.3% (7.9% to 4000ft)  
**MAX IAS 180KT** until JANDO
- Track 196° to JANDO  
**Cross** JANDO AT or ABV 4000ft
- Turn LEFT, track 124° to MEVAD
- Track 123° to PUMRY, then as cleared

### RWY 24

- GRAD 4.0% to 2800ft  
THEN 3.3% (6.6% to 3400ft)  
**MAX IAS 180KT** until TUVBA
- Track 241° to TUVBA  
**Cross** TUVBA AT or ABV 3400ft
- Turn LEFT, track 134° to JANDO
- Track 124° to MEVAD
- Track 123° to PUMRY, then as cleared

Changes: Editorial.

PPHPD07-180