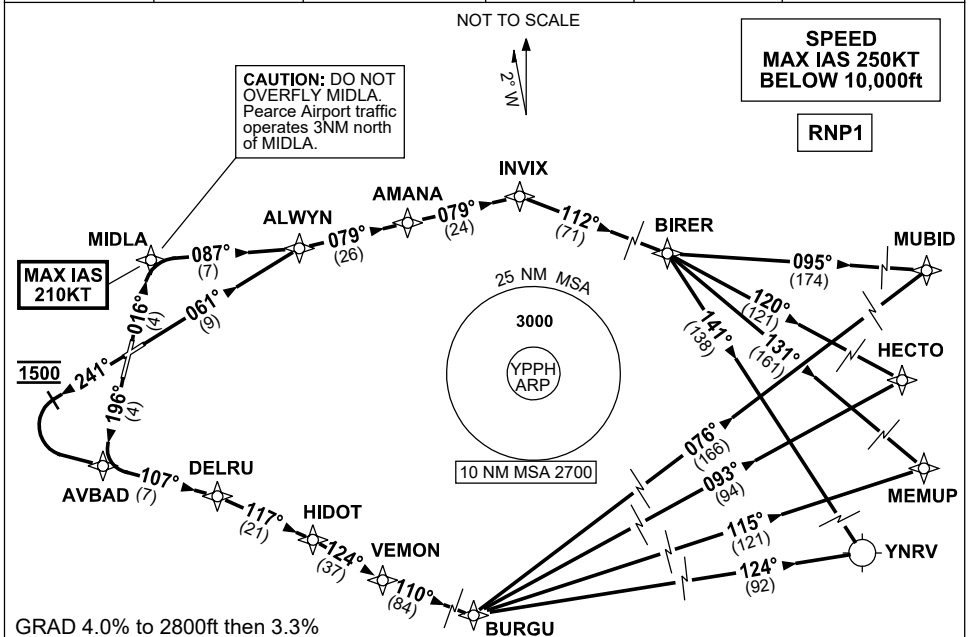


STANDARD INSTRUMENT DEPARTURES (SID) HECTO FIVE, MEMUP FIVE, MUBID FOUR, YNRV FIVE (JET) (RNAV) PERTH, WA (YPPH)

5 SEP 2024

ATIS 113.7 123.8	ACD 118.55	SMC E of RWY 03/21 122.2 W of RWY 03/21 121.7	TWR 127.4	DEP 118.7	Bearings are Magnetic Elevations in FEET AMSL
---------------------	---------------	-----------------------------------------------------	--------------	--------------	--------------------------------------------------



GRAD 4.0% to 2800ft then 3.3%

MUBID	FOUR	DEPARTURE
HECTO	FIVE	DEPARTURE
MEMUP	FIVE	DEPARTURE
RAVENSTHORPE (YNRV)	FIVE	DEPARTURE
RWY 03		
MAX IAS 210KT until MIDLA		
<ul style="list-style-type: none"> Track 016° to MIDLA Turn RIGHT, track 087° to ALWYN 		
RWY 06		
<ul style="list-style-type: none"> Track 061° to ALWYN 		
From ALWYN		
<ul style="list-style-type: none"> Track 079° to AMANA Track 079° to INVIX Turn RIGHT, track 112° to BIRER 		
From BIRER		
For MUBID		
<ul style="list-style-type: none"> Turn LEFT, track 095° to MUBID, then as cleared 		
For HECTO		
<ul style="list-style-type: none"> Turn RIGHT, track 120° to HECTO, then as cleared 		
For MEMUP		
<ul style="list-style-type: none"> Turn RIGHT, track 131° to MEMUP, then as cleared 		
For YNRV		
<ul style="list-style-type: none"> Turn RIGHT, track 141° to YNRV 		

RWY 21

- Track 196° to AVBAD
- Turn LEFT, track 107° to DELRU

RWY 24

- Track 241°
- AT 1500ft turn LEFT
- Track DCT to AVBAD
- Track 107° to DELRU

From DELRU

- Turn RIGHT, track 117° to HIDOT
- Turn RIGHT, track 124° to VEMON
- Turn LEFT, track 110° to BURGU

From BURGU

For MUBID

- Turn LEFT, track 076° to MUBID, then as cleared

For HECTO

- Turn LEFT, track 093° to HECTO, then as cleared

For MEMUP

- Turn RIGHT, track 115° to MEMUP, then as cleared

For YNRV

- Turn RIGHT, track 124° to YNRV

Changes: Editorial.

PPHP04-180