

**STANDARD INSTRUMENT DEPARTURES (SID)  
AMANA FIVE (JET) (RNAV)  
PERTH, WA (YPPH)**

**13 JUN 2024**

ATIS 113.7 123.8	ACD 118.55	SMC E of RWY 03/21 122.2 W of RWY 03/21 121.7	TWR 127.4	DEP 118.7	Bearings are Magnetic Elevations in FEET AMSL
---------------------	---------------	---	--------------	--------------	--

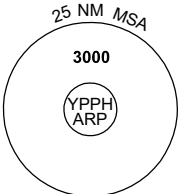
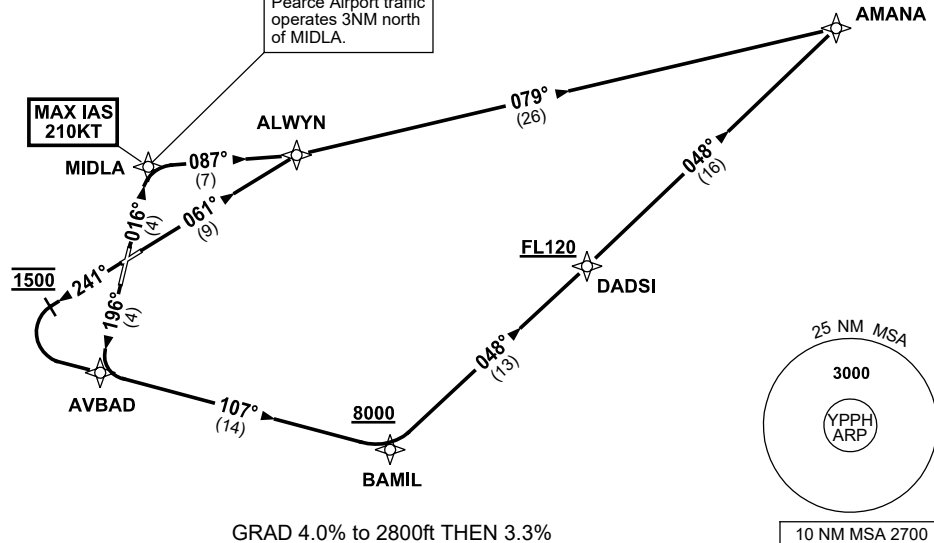
NOT TO SCALE



**SPEED  
MAX IAS 250KT  
BELOW 10,000ft**

**RNP1**

**CAUTION: DO NOT  
OVERFLY MIDLA.**  
Pearce Airport traffic  
operates 3NM north  
of MIDLA.



**AMANA FIVE DEPARTURE (JET)**

**RWY 03**

**MAX IAS 210KT** until MIDLA

- Track 016° to MIDLA,
- Turn RIGHT, track 087° to ALWYN,
- Turn LEFT, track 079° to AMANA, then as cleared

**RWY 06**

- Track 061° to ALWYN,
- Turn RIGHT, track 079° to AMANA, then as cleared

**RWY 21**

- Track 196° to AVBAD

**RWY 24**

- Track 241°
- AT 1500ft turn LEFT,
- Track DCT to AVBAD

**From AVBAD**

- Track 107° to BAMIL  
**Cross** BAMIL AT or ABV 8000ft
- Turn LEFT, track 048° to DADSI,  
**Cross** DADSI AT or ABV FL120,
- Track 048° to AMANA, then as cleared

Changes: DADSI REPLACES HELNA, VALIDITY INDICATOR.

PPHDP03-179