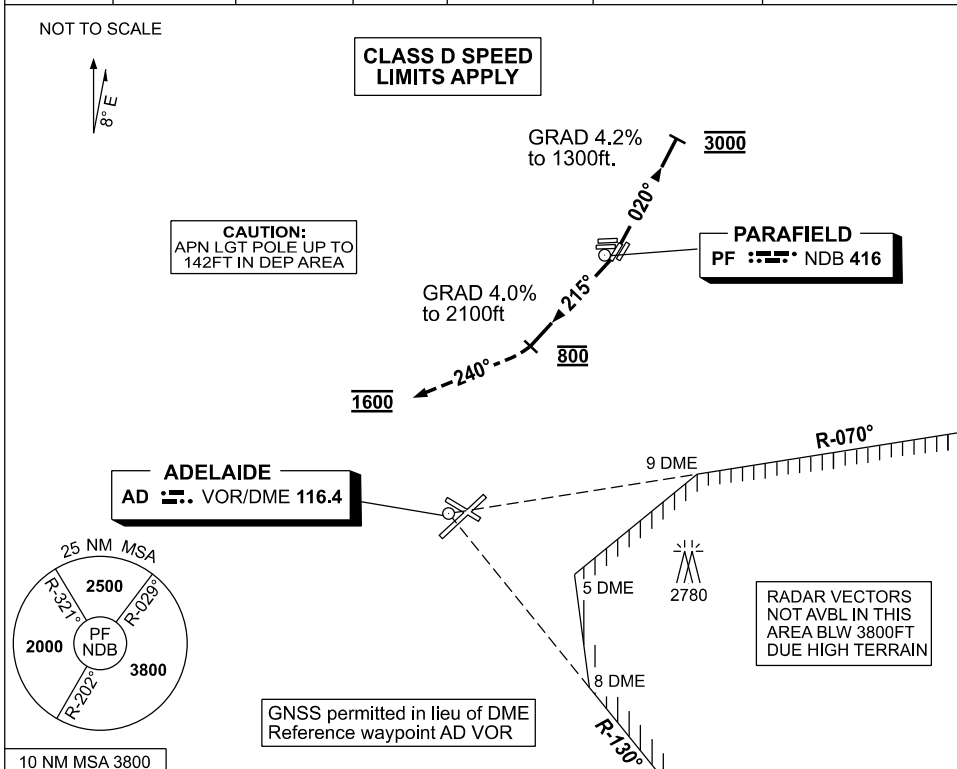


# STANDARD INSTRUMENT DEPARTURES (SID) PARAFIELD ONE DEP (RADAR) - RWY 03L & 21R ADELAIDE/PARAFIELD, SA (YPPF)

19 MAR 2026

ATIS PF 120.9 416	APP AD 124.2 118.2	TWR PF 118.7 124.6	SMC PF 119.9	FIA (AH) AD CEN 130.45	CTAF+AFRU (AH) 118.7	Bearings are Magnetic Elevations in FEET AMSL
----------------------	-----------------------	-----------------------	-----------------	---------------------------	-------------------------	--



## PARAFIELD ONE DEPARTURE (RADAR)

### RWY 03L

- GRAD 4.2% to 1300ft, then 3.3%
- Track 020°
- At 3000ft turn to assigned heading or track
- Contact Approach when advised by Tower or approaching controlled airspace

### RWY 21R

- GRAD 4% to 2100ft, then 3.3%
- At DER, turn RIGHT track 215°
- At 800ft turn RIGHT track 240°
- At 1600ft turn to assigned heading
- Contact Approach when advised by Tower or approaching controlled airspace

## COMMUNICATIONS FAILURE PROCEDURE

On recognition of communication failure

- Squawk 7600
- Maintain last assigned vector for two minutes, and
- CLIMB IF NECESSARY TO MINIMUM SAFE ALTITUDE, to maintain terrain clearance, then
- Proceed in accordance with the latest ATC route clearance acknowledged.

Changes: OBST HGT 142FT IN CAUTION NOTE.

PPFDP01-186