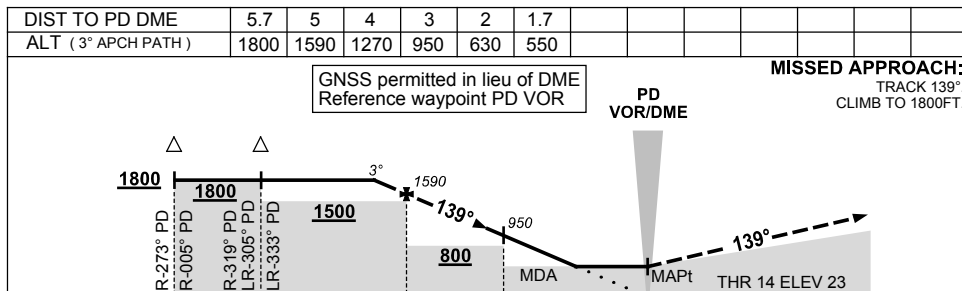
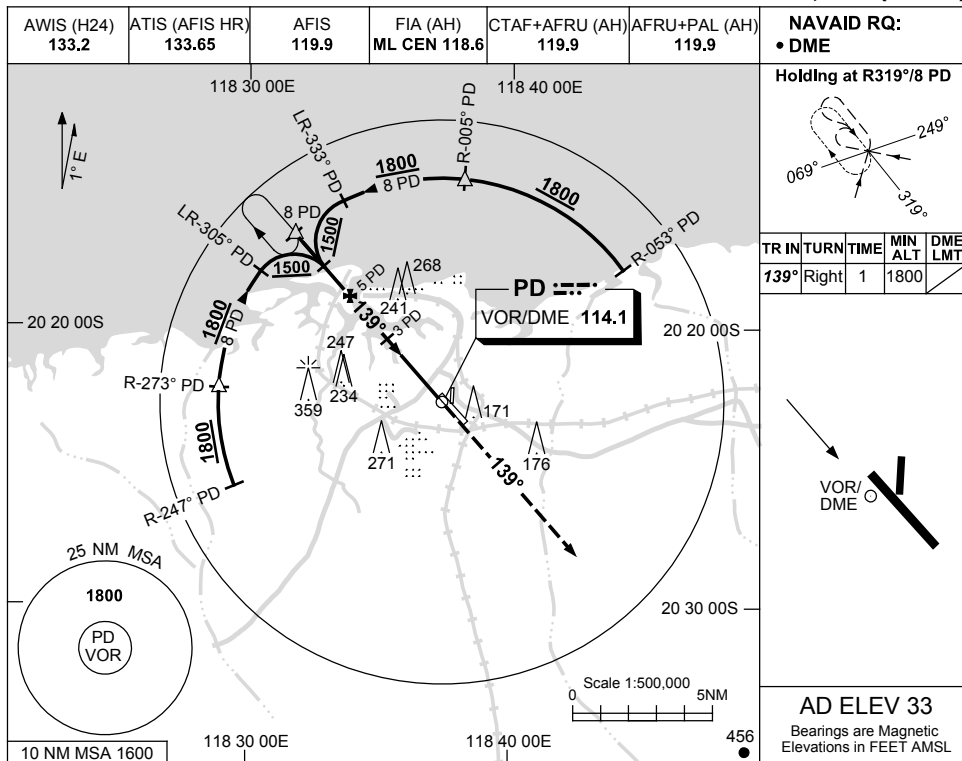


USE QNH

VOR-Z RWY 14

15 AUG 2019

PORT HEDLAND, WA (YPPD)



CATEGORY	A	B	C	D
S-I VOR/DME	550 (527-3.0)			
CIRCLING	720 (687-2.4)	820 (787-4.0)	860 (827-5.0)	
ALTERNATE	(1187-4.4)	(1287-6.0)	(1327-7.0)	

NOTES
 1. MAX IAS:
 INITIAL : 210KT.

Changes: COORD FORMAT, SCALE DEPICTION, Editorial. PPDVO03-160