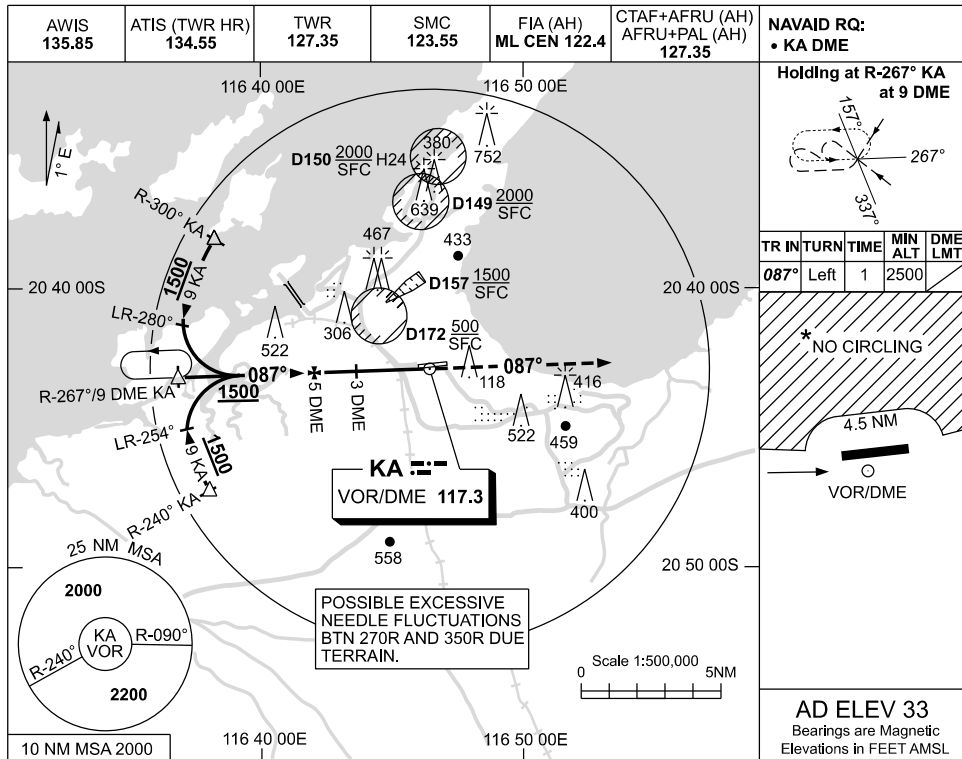


USE QNH

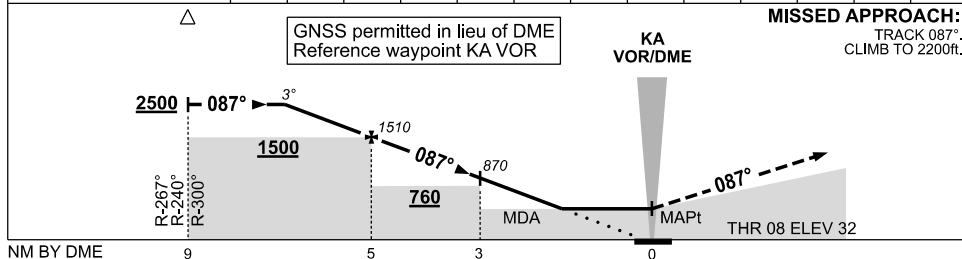
VOR-Z RWY 08

09 JUL 2026

KARRATHA, WA (YPKA)



DIST BY DME	8.1	7	6	5	4	3	2						
ALT (3° APCH PATH)	2500	2150	1830	1510	1190	870	550						



CATEGORY	A	B	C	D
S-I VOR/DME	550 (517-2.9)			
CIRCLING *	860 (827-2.4)		1090 (1057-4.0)	1090 (1057-5.0)
ALTERNATE	(1327-4.4)		(1557-6.0)	(1557-7.0)

- NOTES**
1. MAX IAS:
INITIAL : 210KT.
 2. D157 MAYBE IN USE
WITHOUT NOTAM
PROMULGATION.
 - *3. NO CIRCLING N
OF RWY 08 / 26
BEYOND 4.5NM.

Changes: WATR (H24) CHANGE TO AWIS, D154 DELETED, D157 ADDED.

PKAV001-187