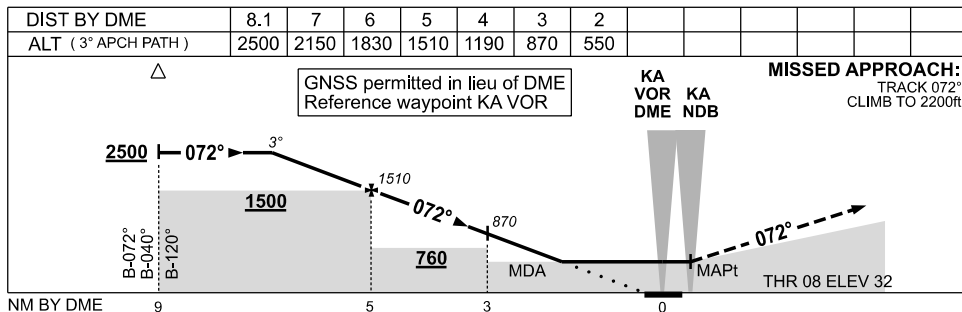
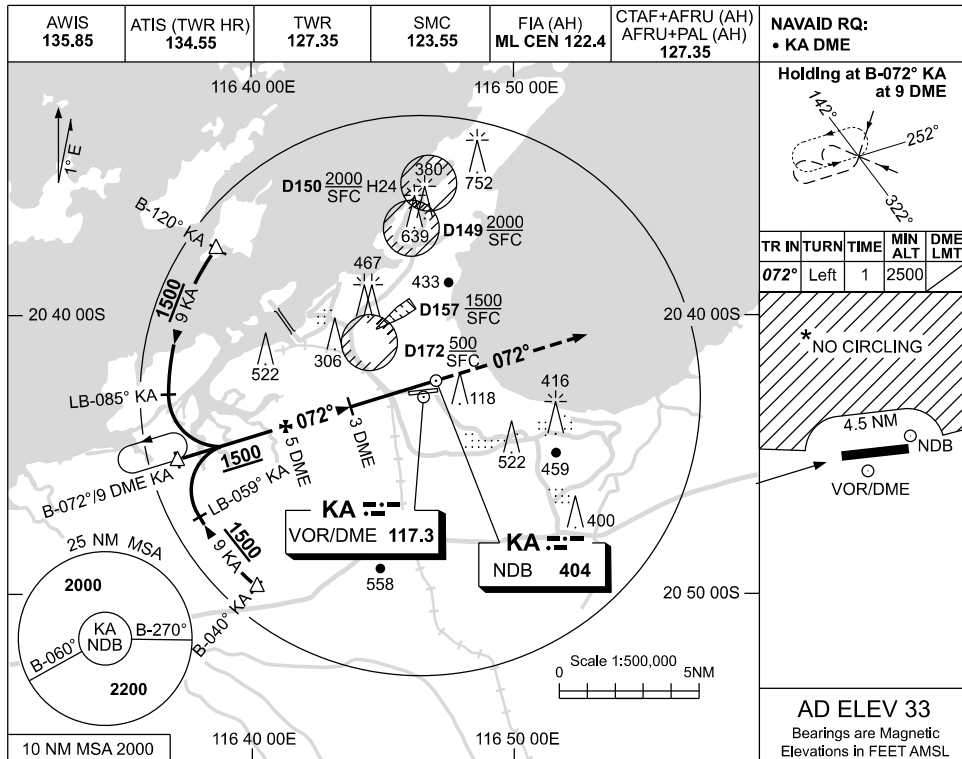


USE QNH

NDB-Z RWY 08

09 JUL 2026

KARRATHA, WA (YPKA)



CATEGORY	A	B	C	D
S-I NDB/DME	550 (517-2.9)			NOT APPLICABLE
CIRCLING *	860 (827-2.4)		1090 (1057-4.0)	
ALTERNATE	(1327-4.4)		(1557-6.0)	

- NOTES**
1. MAX IAS: INITIAL : 210KT.
  2. D157 MAYBE IN USE WITHOUT NOTAM PROMULGATION.
  - \*3. NO CIRCLING N OF RWY 08 / 26 BEYOND 4.5NM.

Changes: WATR (H24) CHANGE TO AWIS, D154 DELETED, D157 ADDED.

PKANB01-187