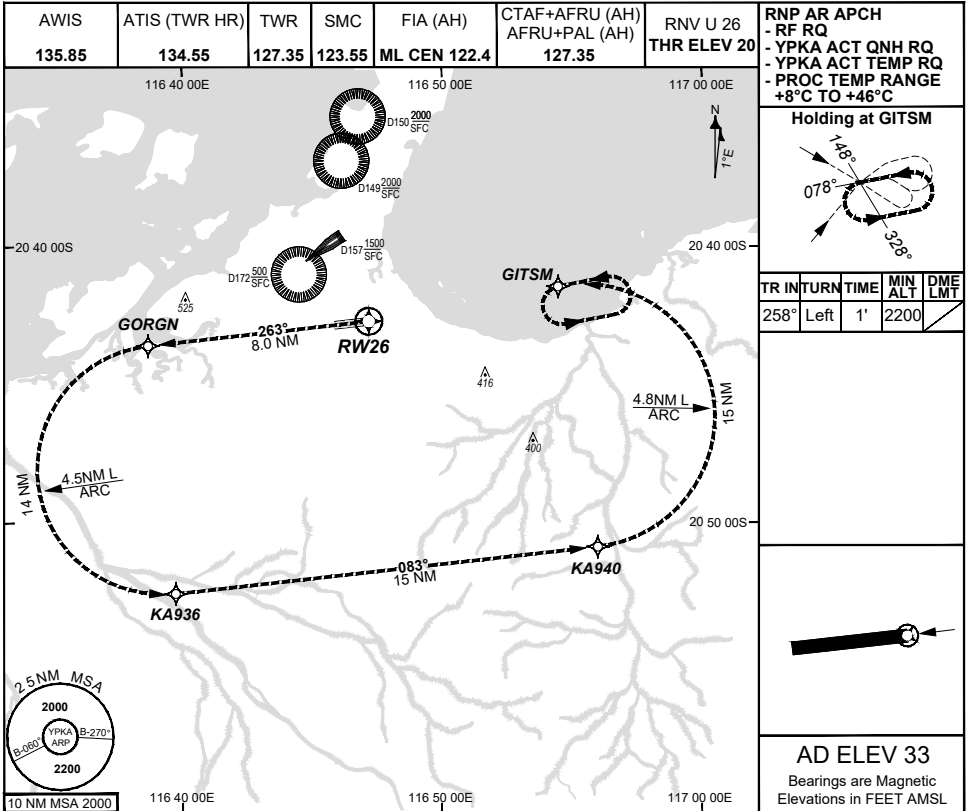


**FOR CASA APPROVED
OPERATORS ONLY
USE QNH**

RNP U RWY 26 (AR) - Page 2
KARRATHA, WA (YPKA)

09 JUL 2026



ENGINE OUT MISSED APPROACH:

Track via the RNP AR Engine Out Missed Approach track to GITSM and hold as published. Acceleration altitude 1100FT QNH (1000FT AGL). Maximum holding speed 230 KIAS. EO hold only.

