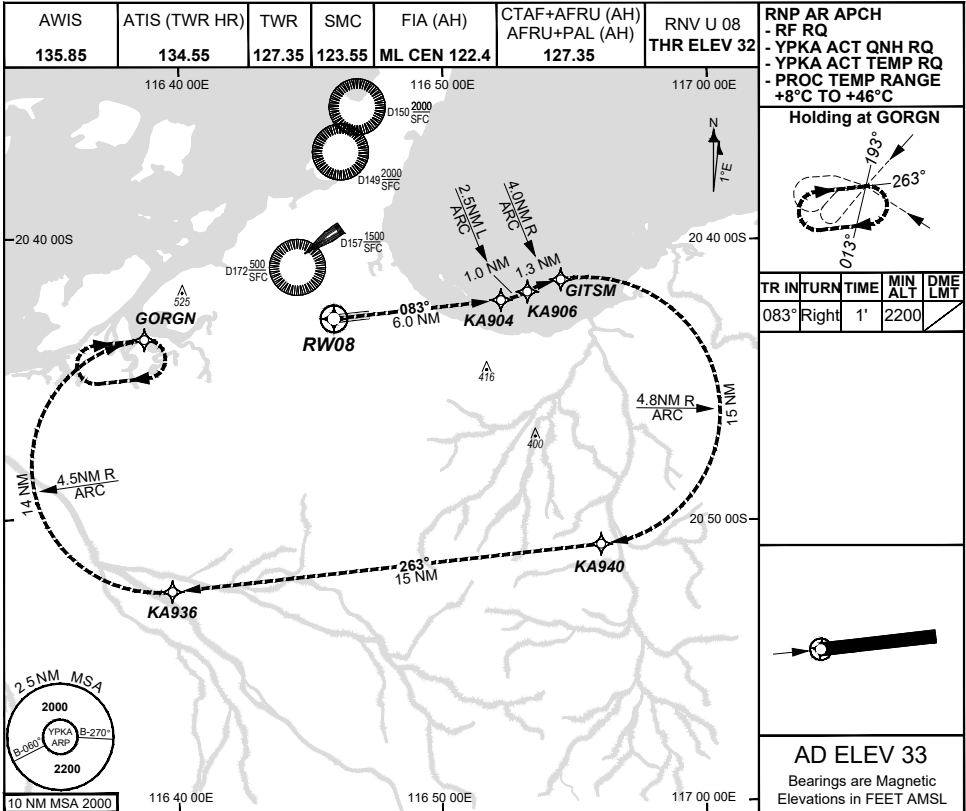


**FOR CASA APPROVED
OPERATORS ONLY**

USE QNH

RNP U RWY 08 (AR) - Page 2
KARRATHA, WA (YPKA)

09 JUL 2026



ENGINE OUT MISSED APPROACH:

Track via the RNP AR Engine Out Missed Approach track to GORGN and hold as published. Acceleration altitude 1100FT QNH (1000FT AGL). Maximum holding speed 230 KIAS. EO hold only.

DO NOT USE FOR NAVIGATION

Prepared by GE Aerospace

