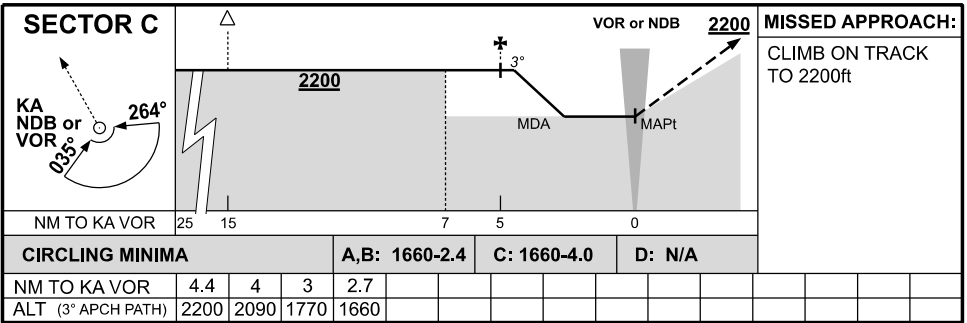
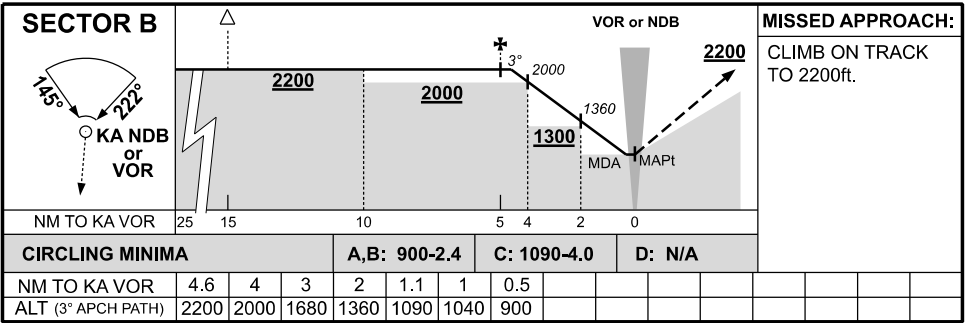
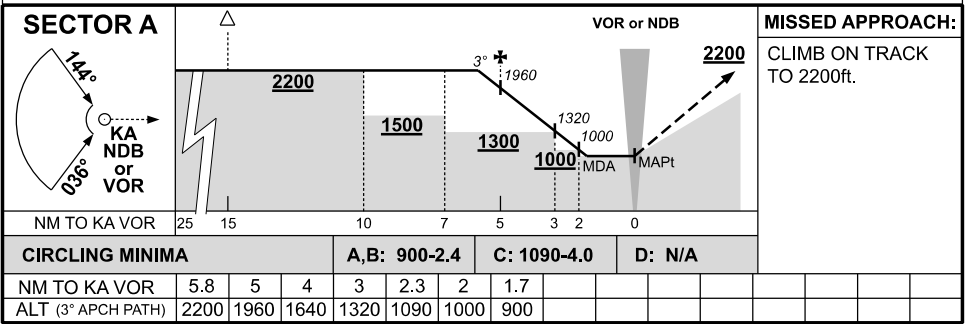
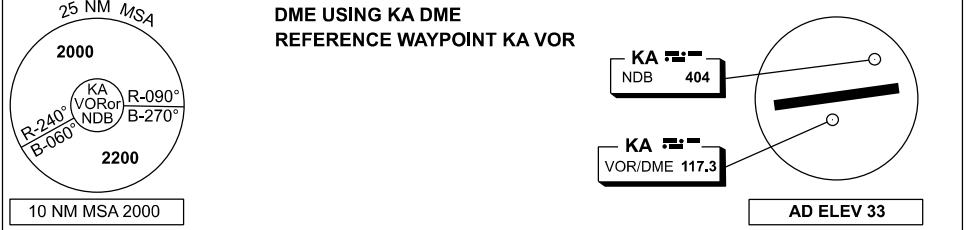


# DME or GNSS ARRIVAL PROCEDURES KARRATHA, WA (YPKA) Page 1

09 JUL 2026

AWIS 135.85	ATIS (TWR HR) 134.55	TWR 127.35	SMC 123.55	FIA (AH) ML CEN 122.4	CTAF+AFRU (AH) AFRU+PAL (AH) 127.35	Bearings are Magnetic Elevations in FEET AMSL
----------------	-------------------------	---------------	---------------	--------------------------	---	--



Changes: WATIR (H24) CHANGE TO AWIS. PKADG01-187