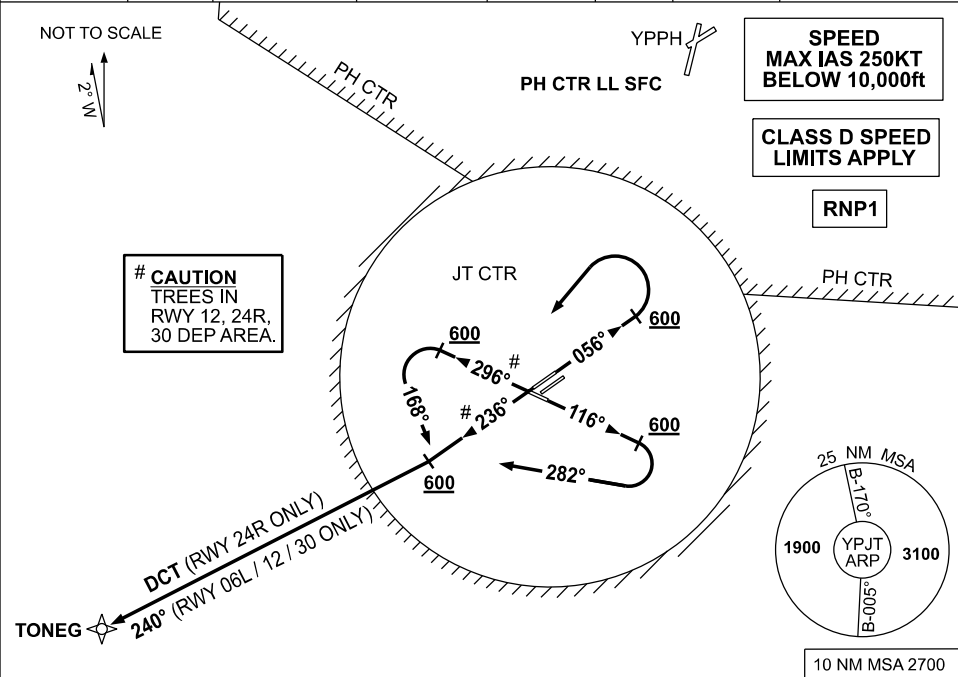


STANDARD INSTRUMENT DEPARTURES (SID)  
TONEG FIVE DEPARTURE (RNAV)  
PERTH/JANDAKOT, WA (YPJT)

04 SEP 2025

ATIS (AWIS AH) 128.65 281	SMC 124.3	TWR (CTAF+AFRU AH) 118.1	FIA PH CEN 135.25	APP (PH) 123.6 132.95	DEP (PH) 118.7	PAL+AA (AH) 123.9	Bearings are Magnetic Elevations in FEET AMSL
------------------------------	--------------	--------------------------------	----------------------	--------------------------	-------------------	----------------------	--



TONEG FIVE DEPARTURE

RWY 06L

- GRAD 3.3%  
MAX IAS 150KT until established to intercept  
TRK to TONEG
- Track 056°
- AT or ABV 600ft turn LEFT to intercept and track  
240° to TONEG
- Then track as cleared.

RWY 24R

- GRAD 3.3%
- Track 236°
- AT or ABV 600ft track DCT to TONEG
- Then track as cleared.

RWY 12

- GRAD 3.3%  
MAX IAS 150KT until established to intercept  
TRK to TONEG
- Track 116°
- AT or ABV 600ft turn RIGHT track 282°
- Intercept and track 240° to TONEG
- Then track as cleared.

RWY 30

- GRAD 3.3%  
MAX IAS 150KT until established to intercept  
TRK to TONEG
- Track 296°
- AT or ABV 600ft, turn LEFT track 168°
- Intercept and track 240° to TONEG
- Then track as cleared.

COMMUNICATIONS FAILURE PROCEDURE

On recognition of communications failure

- Squawk 7600
- Maintain procedure track for two minutes, and
- CLIMB IF NECESSARY TO MINIMUM SAFE ALTITUDE, to maintain terrain clearance, then
- Proceed in accordance with the latest ATC route clearance acknowledged.

Changes: REVISED PROC, VALIDITY INDICATOR, Editorial.

PJTDP03-184