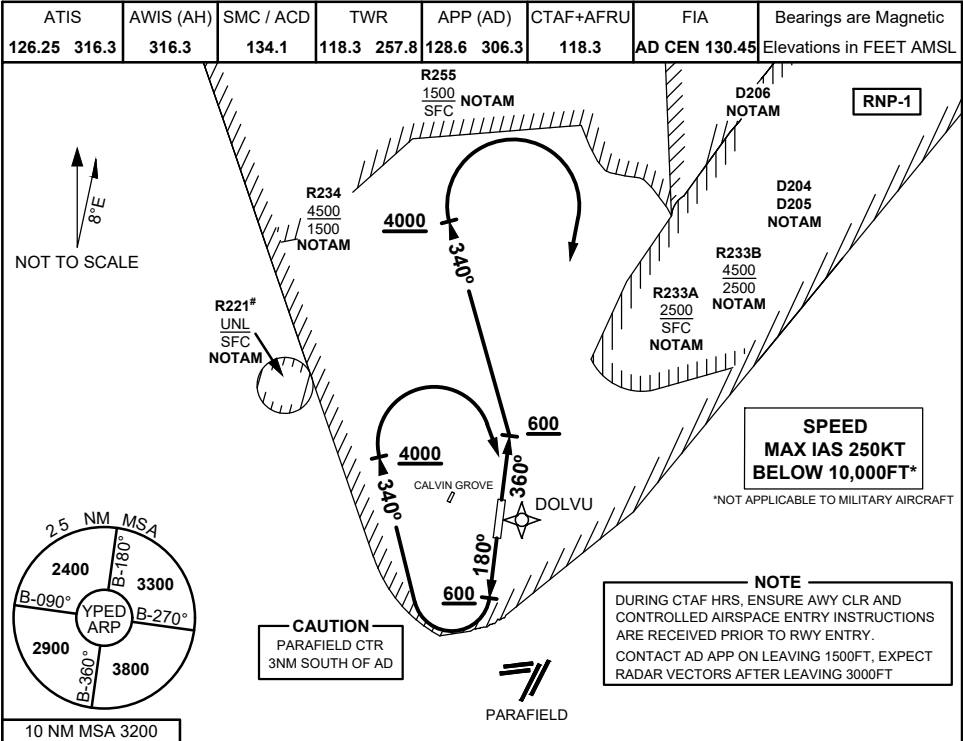


STANDARD INSTRUMENT DEPARTURES (SID)
DOLVU ONE DEPARTURE (RNAV)
EDINBURGH, SA (YPED)

04 SEP 2025



DOLVU ONE DEPARTURE

RWY 18#

- GRAD 3.3%
- Track 180°
(MAX IAS 180KT IN TURN)
- AT 600FT, but not before DER, turn RIGHT track 340°
- AT 4000FT turn RIGHT track DCT to DOLVU
- Intercept route as cleared

PROC NOT AVAILABLE WHEN R221 ACTIVE

RWY 36

- GRAD 3.3%
- Track 360°
- AT 600FT, but not before DER, turn LEFT track 340°
- AT 4000FT turn RIGHT track DCT DOLVU
- Intercept route as cleared

COMMUNICATIONS FAILURE PROCEDURE

On recognition of communication failure

- Squawk 7600.
- Maintain last assigned vector for two minutes and, if necessary, climb to minimum safe altitude to maintain terrain clearance, then
- Proceed in accordance with the latest ATC route clearance acknowledged.

Changes: FROM SUP H63/25

PEDDP02-184

