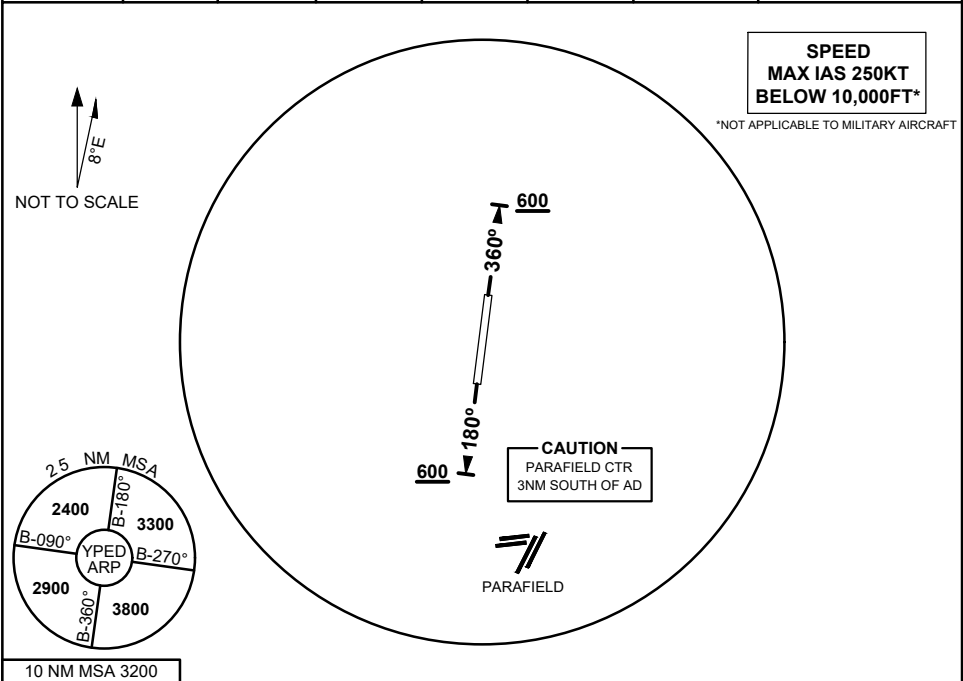


STANDARD INSTRUMENT DEPARTURES (SID)
EDINBURGH FIVE DEPARTURE (RADAR)
EDINBURGH, SA (YPED)

04 SEP 2025

ATIS	AWIS (AH)	SMC / ACD	TWR	APP (AD)	CTAF+AFRU	FIA	Bearings are Magnetic
126.25 316.3	316.3	134.1	118.3 257.8	128.6 306.3	118.3	AD CEN 130.45	Elevations in FEET AMSL



EDINBURGH FIVE DEPARTURE

RWY 18

- GRAD 3.7% to 3000FT, thence 3.3%
- Track 180°
- AT 600FT, but not before DER, turn to assigned heading or track

RWY 36

- GRAD 3.3%
- Track 360°
- AT 600FT, but not before DER, turn to assigned heading or track.

COMMUNICATIONS FAILURE PROCEDURE

On recognition of communication failure

- Squawk 7600.
- Maintain last assigned vector for two minutes and, if necessary, climb to minimum safe altitude to maintain terrain clearance, then
- Proceed in accordance with the latest ATC route clearance acknowledged.

Changes: FROM SUP H63/25

PEDDP01-184

