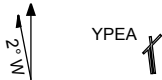


STANDARD INSTRUMENT ARRIVAL (STAR)  
PEARCE FOUR ROMEO ARRIVAL (RNAV)  
PEARCE, WA (YPEA)

13 JUN 2024

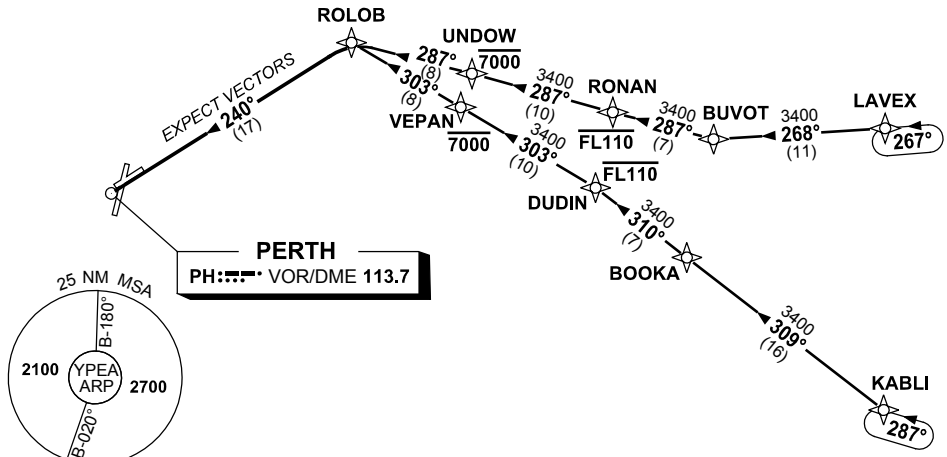
ATIS 340 136.4 316.1	DEP PEA CEN 123.3 135.9	APP PEA APP 130.2	TWR 118.3 257.8	FIA (AH) PH CEN 135.25	CTAF+AFRU (AH) 118.3	AWIS (AH) 316.1	Bearings are Magnetic Elevations in FEET AMSL
----------------------------	-------------------------------	-------------------------	--------------------	---------------------------	-------------------------	--------------------	--

NOT TO SCALE



**SPEED  
MAX IAS 250KT  
BELOW 10,000ft**

**RNP1**



10 NM MSA 2600

**TRANSITIONS:**

- LAVEX:**
- From LAVEX, track 268° to BUVOT, (NON-JET)
  - Turn RIGHT, track 287° to RONAN, **Cross** RONAN AT or BLW FL110,
  - Track 287° to UNDO, **Cross** UNDO AT or BLW 7000ft,
  - Track 287° to ROLOB, Then follow ARRIVAL instructions

- KABL:**
- From KABL, track 309° to BOOKA, (JET)
  - Track 310° to DUDIN, **Cross** DUDIN AT or BLW FL110,
  - Turn LEFT, track 303° to VEPAN, **Cross** VEPAN AT or BLW 7000ft,
  - Track 303° to ROLOB, Then follow ARRIVAL instructions

**ARRIVAL: PEARCE FOUR ROMEO**

- From ROLOB turn LEFT
- Track 240° to PH VOR
- Expect radar vectors to YPEA

**COMMUNICATIONS FAILURE: PROCEDURE IN IMC**

- Squawk 7600, comply with vertical navigation requirements, but not below MSA.
- Track via the latest STAR clearance to the nominated runway, then fly the most suitable approach in accordance with ERSA EMERG Section 1.5.

Changes: WAYPOINT NAMES, VALIDITY INDICATOR, VAR, Editorial.

PEASR03-179