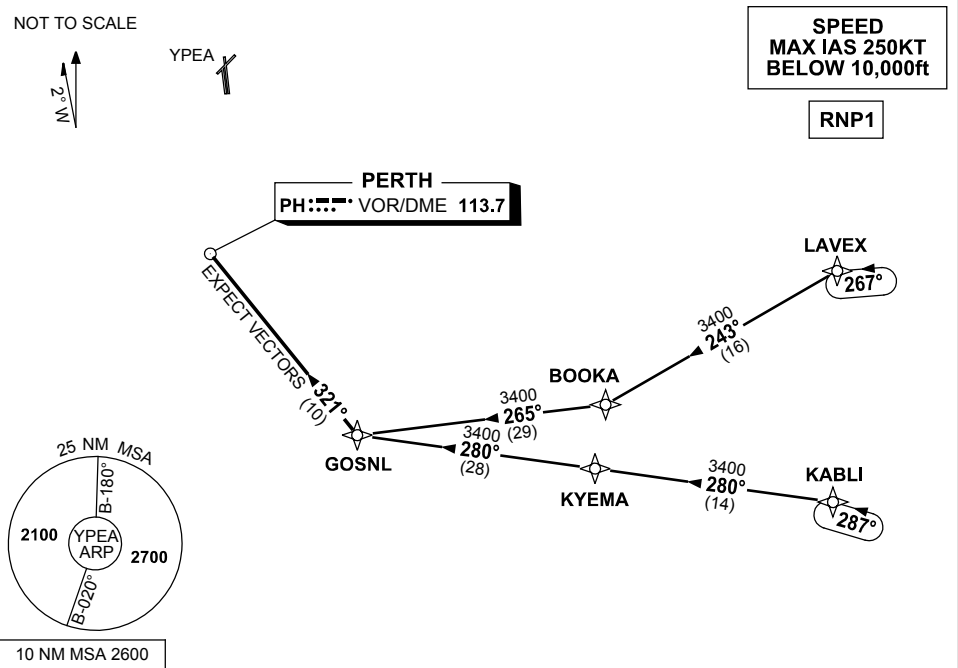


STANDARD INSTRUMENT ARRIVAL (STAR)
PEARCE FOUR GOLF ARRIVAL (RNAV)
PEARCE, WA (YPEA)

13 JUN 2024

ATIS 340 136.4 316.1	DEP PEA CEN 123.3 135.9	APP PEA APP 130.2	TWR 118.3 257.8	FIA (AH) PH CEN 135.25	CTAF+AFRU (AH) 118.3	AWIS (AH) 316.1	Bearings are Magnetic Elevations in FEET AMSL
----------------------------	-------------------------------	-------------------------	--------------------	---------------------------	-------------------------	--------------------	--



TRANSITIONS:

**LAVEX:
(NON-JET)**

- From LAVEX track 243° to BOOKA
- Turn RIGHT, track 265° to GOSNL
- Then follow ARRIVAL instructions

**KABLI:
(JET)**

- From KABLI track 280° to KYEMA
- Track 280° to GOSNL
- Then follow ARRIVAL instructions

ARRIVAL:

PEARCE FOUR GOLF

- From GOSNL, turn RIGHT, track 321° to PH VOR
- Expect radar vectors to YPEA

COMMUNICATIONS FAILURE: PROCEDURE IN IMC

- Squawk 7600, comply with vertical navigation requirements, but not below MSA.
- Track via the latest STAR clearance to the nominated runway, then fly the most suitable approach in accordance with ERSA EMERG Section 1.5.

Changes: LAVEX REPLACES GRENE, KABLI REPLACES BEVLY, VALIDITY INDICATOR, VAR, Editorial.

PEASR02-179