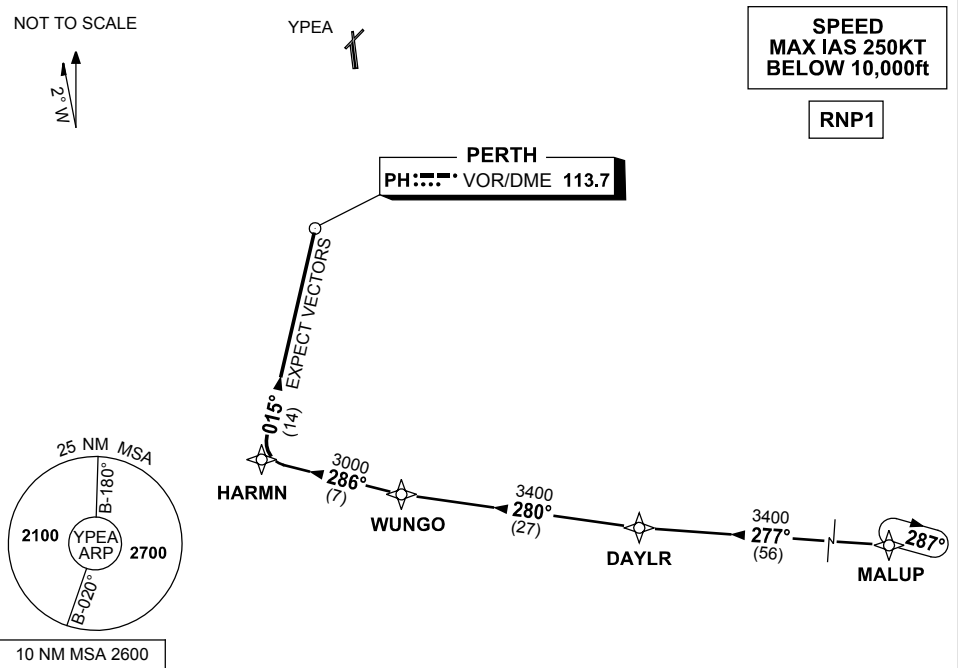


STANDARD INSTRUMENT ARRIVAL (STAR)
PEARCE FOUR WHISKEY ARRIVAL (RNAV)
PEARCE, WA (YPEA)

13 JUN 2024

ATIS 340 136.4 316.1	DEP PEA CEN 123.3 135.9	APP PEA APP 130.2	TWR 118.3 257.8	FIA (AH) PH CEN 135.25	CTAF+AFRU (AH) 118.3	AWIS (AH) 316.1	Bearings are Magnetic Elevations in FEET AMSL
----------------------------	-------------------------------	-------------------------	--------------------	---------------------------	-------------------------	--------------------	--



TRANSITIONS:

MALUP:

(NON-JET)

- From MALUP track 277° to DAYLR
- Turn RIGHT, track 280° to WUNGO
- Then follow ARRIVAL instructions

ARRIVAL:

PEARCE FOUR WHISKEY

- From WUNGO turn RIGHT
- Track 286° to HARMN
- Turn RIGHT, track 015° to PH VOR
- Expect radar vectors to YPEA

COMMUNICATIONS FAILURE: PROCEDURE IN IMC

- Squawk 7600, comply with vertical navigation requirements, but not below MSA.
- Track via the latest STAR clearance to the nominated runway, then fly the most suitable approach in accordance with ERSA EMERG Section 1.5.

Changes: MALUP REPLACES HAMTN, VALIDITY INDICATOR, VAR, Editorial.

PEASR01-179