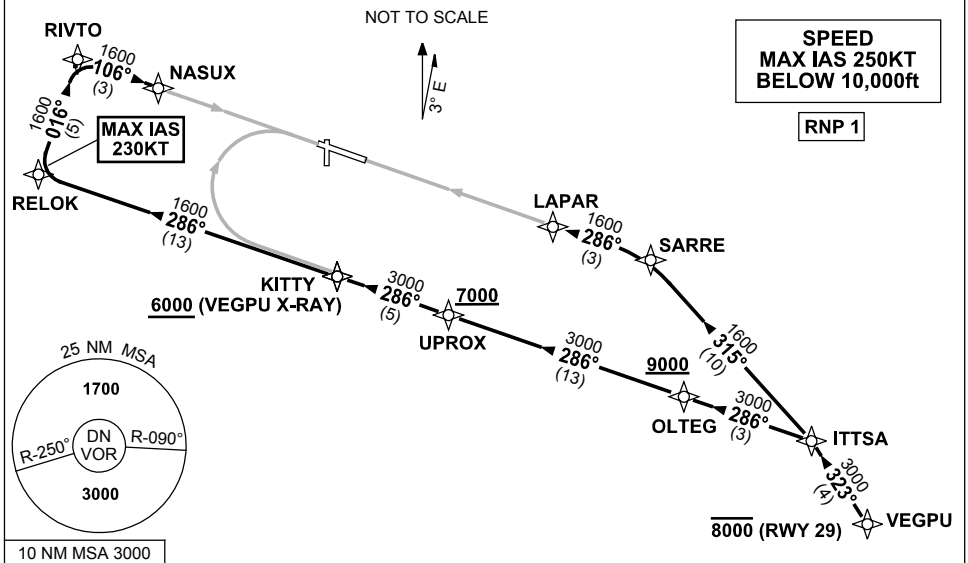


**STANDARD INSTRUMENT ARRIVAL (STAR)
VEGPU ONE WHISKEY, X-RAY ARRIVAL (RNAV)
DARWIN, NT (YPDN)**

12 JUN 2025

| | | | | | |
|-----------------------------|----------------------------|--------------|--------------|--|--|
| ATIS 128.25 308 316.2 | APP-E 125.2 APP-W 134.1 | TWR 133.1 | SMC 121.8 | | Bearings are Magnetic Elevations in FEET AMSL |
|-----------------------------|----------------------------|--------------|--------------|--|--|



ARRIVAL: VEGPU ONE

RWY 11 WHISKEY:

- From VEGPU track 323° to ITTSA
- Turn LEFT, track 286° to OLTEG
Cross OLTEG AT or ABV 9000ft
- Track 286° to UPROX
Cross UPROX AT or ABV 7000ft
- Track 286° to KITTY for RNP W (AR)
or RNP S (AR) RWY 11 approach

RWY 11 X-RAY:

- From VEGPU track 323° to ITTSA
- Turn LEFT, track 286° to OLTEG
Cross OLTEG AT or ABV 9000ft
- Track 286° to UPROX
Cross UPROX AT or ABV 7000ft
- Track 286° to KITTY
Cross KITTY AT or ABV 6000ft
- Track 286° to RELOK
MAX IAS 230KT from RELOK
- Turn RIGHT track 016° to RIVTO
- Turn RIGHT track 106° to NASUX for
RNP X (AR) or RNP Y (AR)
RWY 11 approach

RWY 29 X-RAY:

- Cross VEGPU AT or BLW 8000ft
- From VEGPU, track 323° to ITTSA
- Turn LEFT, track 315° to SARRE
- Turn LEFT, track 286° to LAPAR for
RNP X (AR) or RNP Y (AR)
RWY 29 approach

COMMUNICATIONS FAILURE: PROCEDURE IN IMC

- Squawk 7600, comply with vertical navigation requirements, but not below MSA.
- Track via the latest STAR clearance to the nominated runway, then fly the most suitable approach in accordance with ERSA EMERG Section 1.5.

Changes: Editorial.

PDNSR07-183