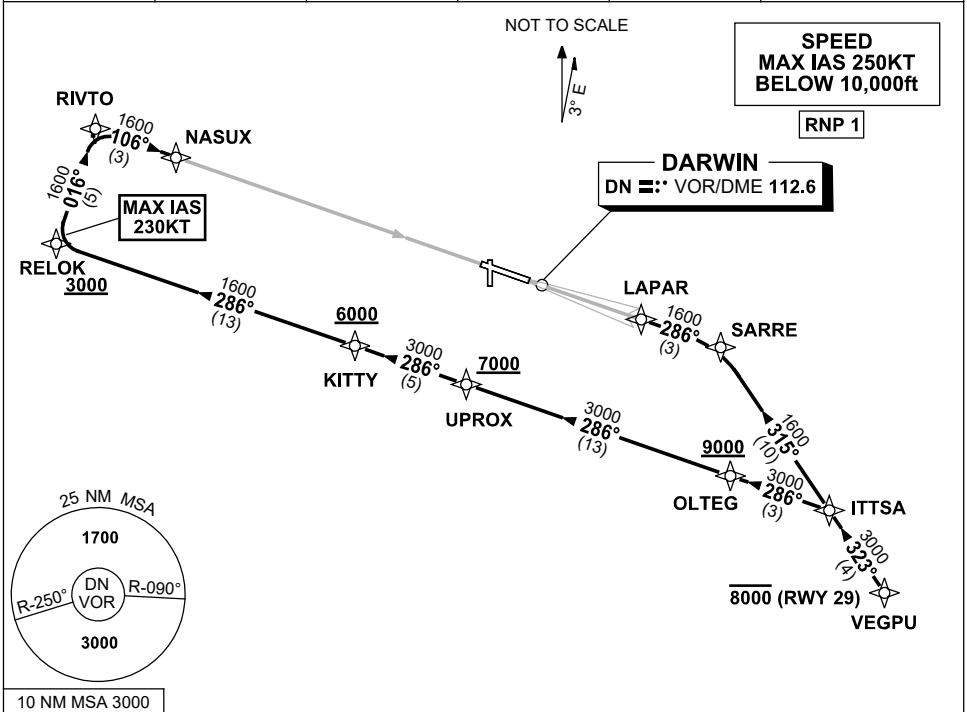


STANDARD INSTRUMENT ARRIVAL (STAR)  
VEGPU ONE ALPHA ARRIVAL (RNAV)  
**DARWIN, NT (YPDN)**

20 MAR 2025

ATIS 128.25 308 316.2	APP-E 125.2 APP-W 134.1	TWR 133.1	SMC 121.8		Bearings are Magnetic Elevations in FEET AMSL
-----------------------------	----------------------------	--------------	--------------	--	--



**ARRIVAL: VEGPU ONE ALPHA**

**RWY 11:**

- From VEGPU track 323° to ITTSA
- Turn LEFT, track 286° to OLTEG  
**Cross** OLTEG AT or ABV 9000ft
- Track 286° to UPROX  
**Cross** UPROX AT or ABV 7000ft
- Track 286° to KITTY  
**Cross** KITTY AT or ABV 6000ft
- Track 286° to RELOK  
**Cross** RELOK AT or ABV 3000ft  
MAX IAS 230KT from RELOK
- Turn RIGHT track 016° to RIVTO
- Turn RIGHT track 106° to NASUX for  
VOR or NDB RWY 11 approach

**RWY 29:**

- **Cross** VEGPU AT or BLW 8000ft
- From VEGPU, track 323° to ITTSA
- Turn LEFT, track 315° to SARRE
- Turn LEFT, track 286° to LAPAR for  
ILS or LOC RWY 29 approach

**COMMUNICATIONS FAILURE: PROCEDURE IN IMC**

- Squawk 7600, comply with vertical navigation requirements, but not below MSA.
- Track via the latest STAR clearance to the nominated runway, then fly the most suitable approach in accordance with ERSa EMERG Section 1.5.

Changes: RELOK ALT RQMNTS, RIVTO-NASUX AND ITTSA-SARRE COURSES.

PDNSR06-182