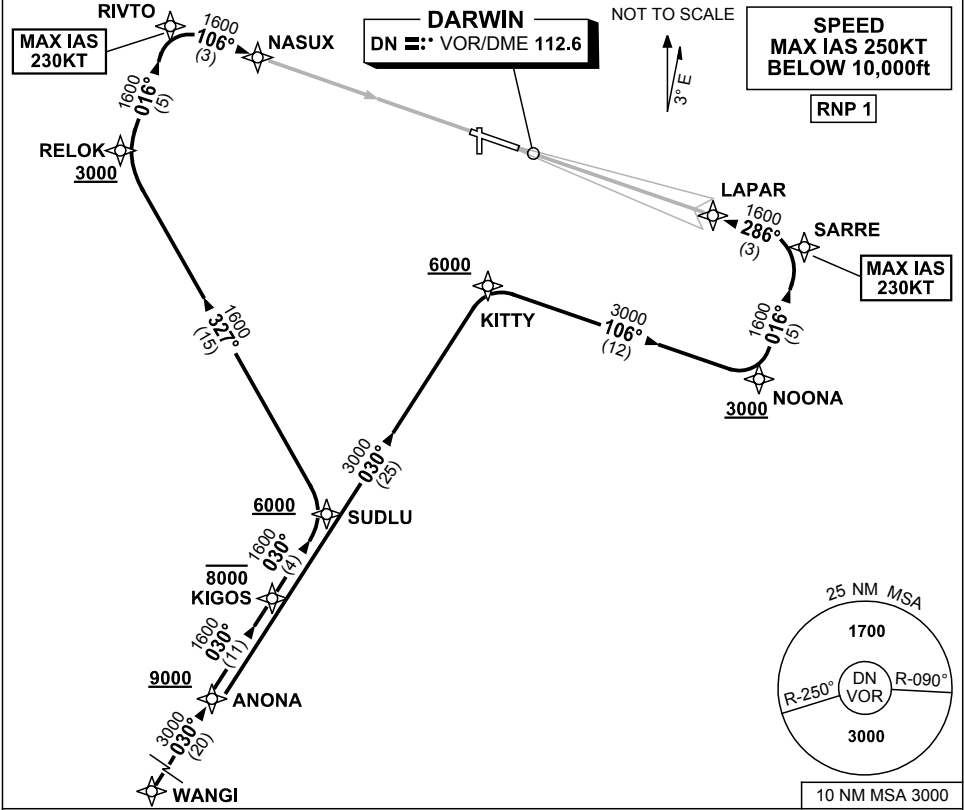


STANDARD INSTRUMENT ARRIVAL (STAR)
WANGI FIVE ALPHA ARRIVAL (RNAV)
DARWIN, NT (YPDN)

20 MAR 2025

ATIS 128.25 308 316.2	APP-E 125.2 APP-W 134.1	TWR 133.1	SMC 121.8		Bearings are Magnetic Elevations in FEET AMSL
-----------------------------	----------------------------	--------------	--------------	--	--



ARRIVAL: WANGI FIVE ALPHA

RWY 11:

- From WANGI track 030° to ANONA
Cross ANONA AT or ABV 9000ft
- Track 030° to KIGOS
Cross KIGOS AT or BLW 8000ft
- Track 030° to SUDLU
Cross SUDLU AT or ABV 6000ft
- Turn LEFT, track 327° to RELOK
Cross RELOK AT or ABV 3000ft
- Turn RIGHT track 016° to RIVTO,
MAX IAS 230KT from RIVTO
- Turn RIGHT track 106° to NASUX for
VOR or NDB RWY 11 approach

RWY 29:

- From WANGI track 030° to ANONA
Cross ANONA AT or ABV 9000ft
- Track 030° to KITTY
Cross KITTY AT or ABV 6000ft
- Turn RIGHT, track 106° to NOONA
Cross NOONA AT or ABV 3000ft
- Turn LEFT, track 016° to SARRE
MAX IAS 230KT from SARRE
- Turn LEFT, track 286° to LAPAR for
ILS or LOC RWY 29 approach

COMMUNICATIONS FAILURE: PROCEDURE IN IMC

- Squawk 7600, comply with vertical navigation requirements, but not below MSA.
- Track via the latest STAR clearance to the nominated runway, then fly the most suitable approach in accordance with ERSA EMERG Section 1.5.

Changes: NOONA AND RELOK ALT RQMNTS, SUDLU-RELOK COURSE.

PDNSR05-182