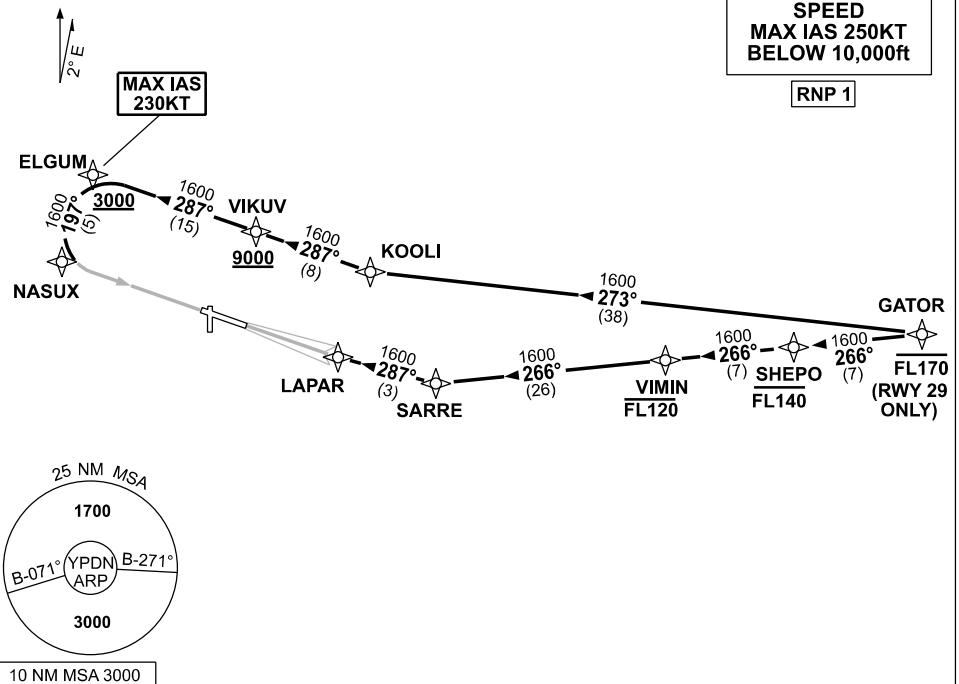


# STANDARD INSTRUMENT ARRIVAL (STAR) GATOR FOUR ALPHA ARRIVAL (RNAV) DARWIN, NT (YPDN)

19 MAR 2026

ATIS 128.25 308 316.2	APP-E 125.2 APP-W 134.1	TWR 133.1	SMC 121.8		Bearings are Magnetic Elevations in FEET AMSL
-----------------------------	----------------------------	--------------	--------------	--	--

NOT TO SCALE



## ARRIVAL: GATOR FOUR ALPHA

### RWY 11:

- From GATOR track 273° to KOOLI
- Turn RIGHT track 287° to VIKUV  
**Cross** VIKUV AT or ABV 9000ft
- Track 287° to ELGUM,  
**Cross** ELGUM AT or ABV 3000ft  
MAX IAS 230KT FROM ELGUM
- Turn LEFT track 197° to NASUX for  
VOR or NDB RWY 11 approach

### RWY 29:

- Cross** GATOR AT or BLW FL170
- From GATOR track 266° TO SHEPO  
**Cross** SHEPO AT or BLW FL140
- From SHEPO track 266° TO VIMIN  
**Cross** VIMIN AT or BLW FL120
- From VIMIN track 266° to SARRE
- Turn RIGHT track 287° to LAPAR for ILS or  
LOC RWY 29 approach.

## COMMUNICATIONS FAILURE: PROCEDURE IN IMC

- Squawk 7600, comply with vertical navigation requirements, but not below MSA.
- Track via the latest STAR clearance to the nominated runway, then fly the most suitable approach in accordance with ERSa EMERG Section 1.5.

Changes: MAG VAR, MSA REFERENCE, Editorial.

PDNSR04-186