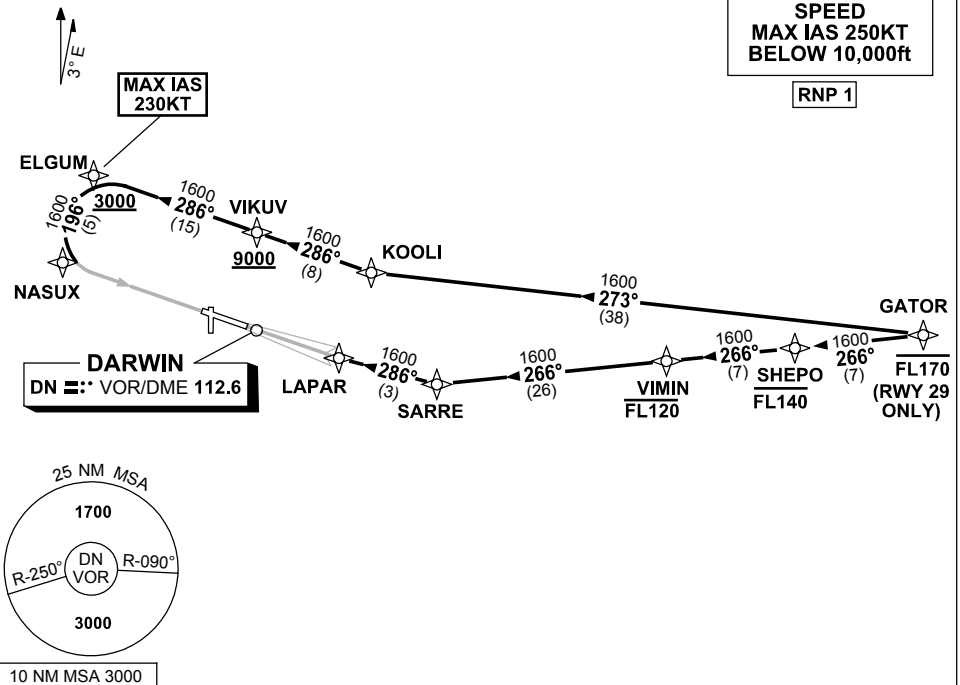


STANDARD INSTRUMENT ARRIVAL (STAR) GATOR FOUR ALPHA ARRIVAL (RNAV) DARWIN, NT (YPDN)

12 JUN 2025

ATIS 128.25 308 316.2	APP-E 125.2 APP-W 134.1	TWR 133.1	SMC 121.8		Bearings are Magnetic Elevations in FEET AMSL
-----------------------------	----------------------------	--------------	--------------	--	--

NOT TO SCALE



ARRIVAL: GATOR FOUR ALPHA

RWY 11:

- From GATOR track 273° to KOOLI
- Turn RIGHT, track 286° to VIKUV
Cross VIKUV AT or ABV 9000ft
- Track 286° to ELGUM,
Cross ELGUM AT or ABV 3000ft
MAX IAS 230KT FROM ELGUM
- Turn LEFT, track 196° to NASUX for
VOR or NDB RWY 11 approach

RWY 29:

- Cross** GATOR AT or BLW FL170
- From GATOR track 266° TO SHEPO
Cross SHEPO AT or BLW FL140
- From SHEPO track 266° TO VIMIN
Cross VIMIN AT or BLW FL120
- From VIMIN track 266° to SARRE
- Turn RIGHT, track 286° to LAPAR for ILS or
LOC RWY 29 approach.

COMMUNICATIONS FAILURE: PROCEDURE IN IMC

- Squawk 7600, comply with vertical navigation requirements, but not below MSA.
- Track via the latest STAR clearance to the nominated runway, then fly the most suitable approach in accordance with ERSA EMERG Section 1.5.

Changes: SHEPO AND VIMIN WPT.

PDNSR04-183