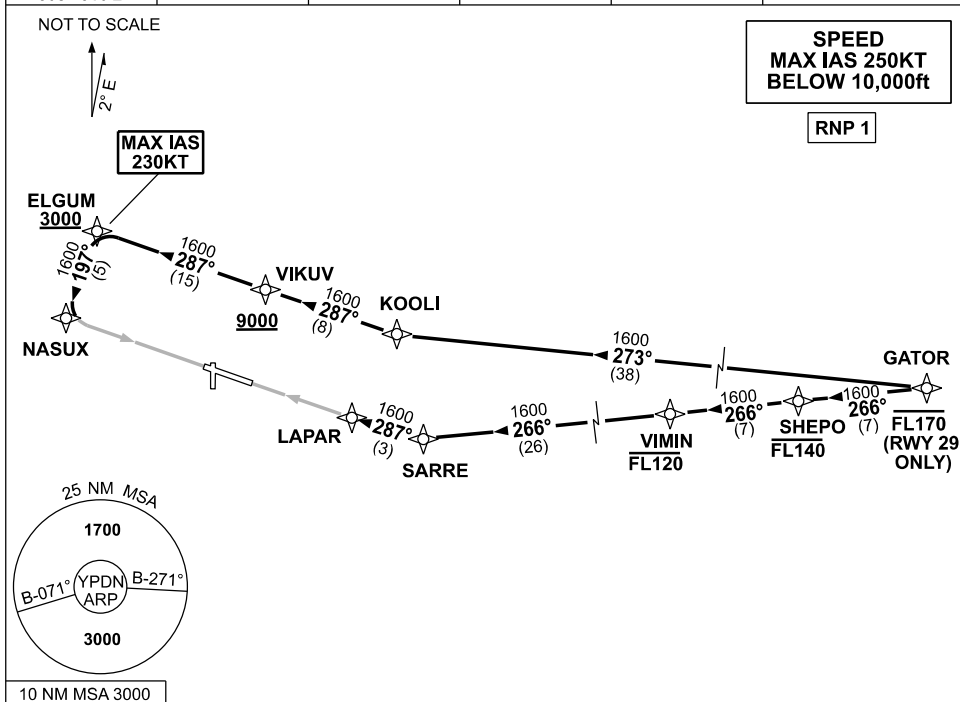


**STANDARD INSTRUMENT ARRIVAL (STAR)  
GATOR FOUR X-RAY ARRIVAL (RNAV)  
DARWIN, NT (YPDN)**

**19 MAR 2026**

ATIS 128.25 308 316.2	APP-E 125.2 APP-W 134.1	TWR 133.1	SMC 121.8		Bearings are Magnetic Elevations in FEET AMSL
-----------------------------	----------------------------	--------------	--------------	--	--------------------------------------------------



**ARRIVAL: GATOR FOUR X-RAY**

**RWY 11:**

- From GATOR track 273° to KOOLI
- Turn RIGHT track 287° to VIKUV  
**Cross** VIKUV AT or ABV 9000ft
- Track 287° to ELGUM,  
**Cross** ELGUM AT or ABV 3000ft  
**MAX IAS 230KT FROM ELGUM**
- Turn LEFT track 197° to NASUX  
for RNP X (AR) or RNP Y (AR)  
RWY 11 approach

**RWY 29:**

- **Cross** GATOR AT or BLW FL170
- From GATOR track 266° TO SHEPO  
**Cross** SHEPO AT or BLW FL140
- From SHEPO track 266° TO VIMIN  
**Cross** VIMIN AT or BLW FL120
- From VIMIN track 266° to SARRE
- Turn RIGHT, track 287° to LAPAR for  
RNP X (AR) or RNP Y (AR) RWY 29  
approach

**COMMUNICATIONS FAILURE: PROCEDURE IN IMC**

- Squawk 7600, comply with vertical navigation requirements, but not below MSA.
- Track via the latest STAR clearance to the nominated runway, then fly the most suitable approach in accordance with ERS A EMERG Section 1.5.

Changes: MAG VAR, MSA REFERENCE, Editorial.

PDNSR02-186