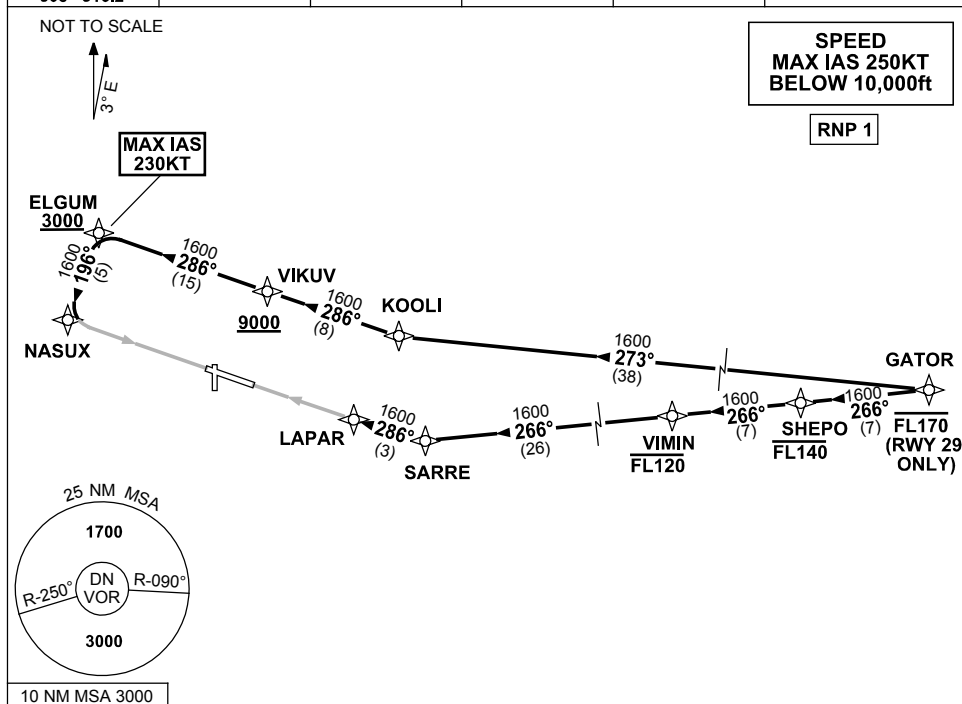


STANDARD INSTRUMENT ARRIVAL (STAR)  
GATOR FOUR X-RAY ARRIVAL (RNAV)  
DARWIN, NT (YPDN)

12 JUN 2025

ATIS 128.25 308 316.2	APP-E 125.2 APP-W 134.1	TWR 133.1	SMC 121.8		Bearings are Magnetic Elevations in FEET AMSL
-----------------------------	----------------------------	--------------	--------------	--	--



**ARRIVAL: GATOR FOUR X-RAY**

**RWY 11:**

- From GATOR track 273° to KOOLI
- Turn RIGHT, track 286° to VIKUV
- **Cross** VIKUV AT or ABV 9000ft
- Track 286° to ELGUM,
- **Cross** ELGUM AT or ABV 3000ft
- **Cross** ELGUM AT or ABV 3000ft  
MAX IAS 230KT FROM ELGUM
- Turn LEFT, track 196° to NASUX  
for RNP X (AR) or RNP Y (AR)  
RWY 11 approach

**RWY 29:**

- **Cross** GATOR AT or BLW FL170
- From GATOR track 266° TO SHEPO
- **Cross** SHEPO AT or BLW FL140
- From SHEPO track 266° TO VIMIN
- **Cross** VIMIN AT or BLW FL120
- From VIMIN track 266° to SARRE
- Turn RIGHT, track 286° to LAPAR for  
RNP X (AR) or RNP Y (AR) RWY 29  
approach

**COMMUNICATIONS FAILURE: PROCEDURE IN IMC**

- Squawk 7600, comply with vertical navigation requirements, but not below MSA.
- Track via the latest STAR clearance to the nominated runway, then fly the most suitable approach in accordance with ERSA EMERG Section 1.5.

Changes: SHEPO AND VIMIN WPT, ELGUM ALT REQUIREMENT.

PDNSR02-183