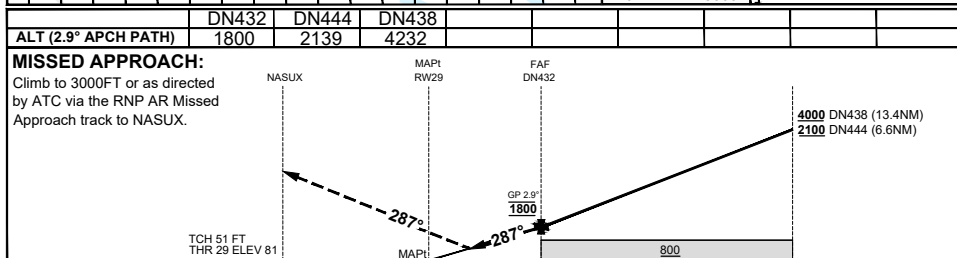
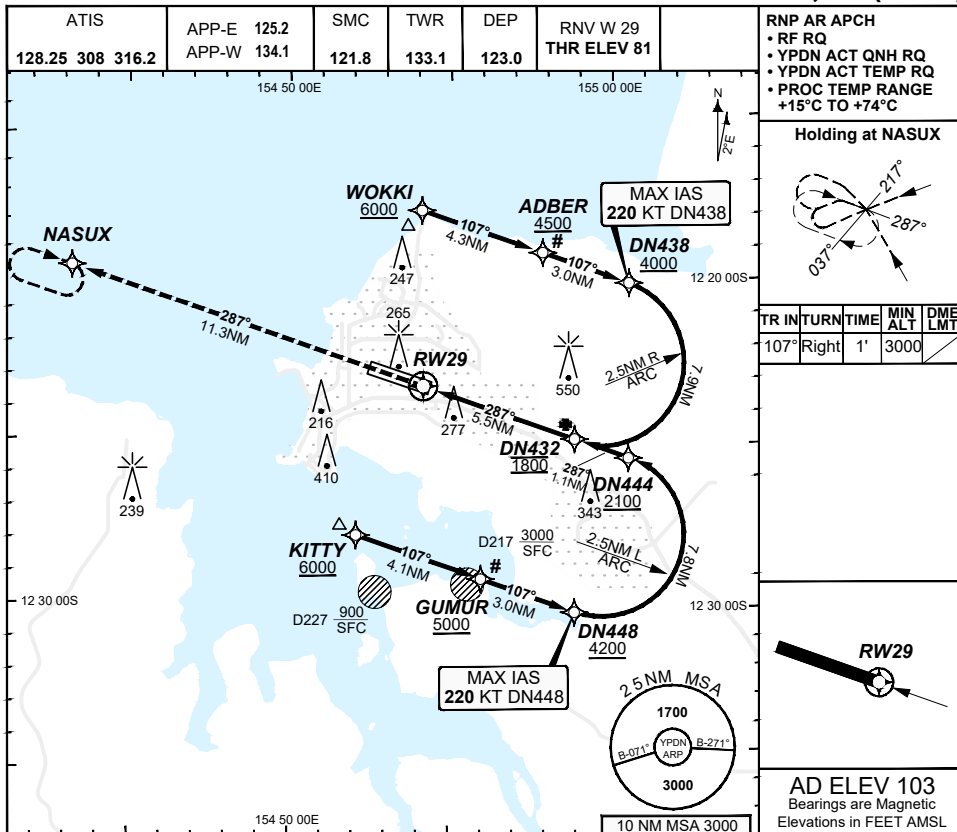


**FOR CASA APPROVED  
OPERATORS ONLY  
USE QNH**

RNP W RWY 29 (AR)  
**DARWIN, NT (YPDN)**

**09 JUL 2026**



CATEGORY	A	B	C	D
RNP (0.30)			DA(H) 472 (391 - 2.3) 1.4 HIALS	DA(H) 472 (391 - 2.3) 1.4 HIALS
RNP (0.15)			DA(H) 432 (351 - 2.0) 1.1 HIALS	DA(H) 432 (351 - 2.0) 1.1 HIALS
CIRCLING		N/A	NOT AUTHORISED	NOT AUTHORISED
ALTERNATE				

- NOTES**
- PAPI not coincident with VPA.
  - RNP 0.3 RQ FROM WOKKI TO DN432.
  - RNP 0.3 RQ FROM KITTY TO DN432.
  - MIN MAP GRAD 4.1% TO 3000FT per ATC.
  - 5# Latest Intercept Point (LIP)

202602171109 General Electric Company Proprietary & Confidential Information

Changes: Editorial.

PDNGN19-187

**DO NOT USE FOR NAVIGATION**

Prepared by GE Aerospace - ICAO Doc 9905 Compliant

© Airservices Australia

