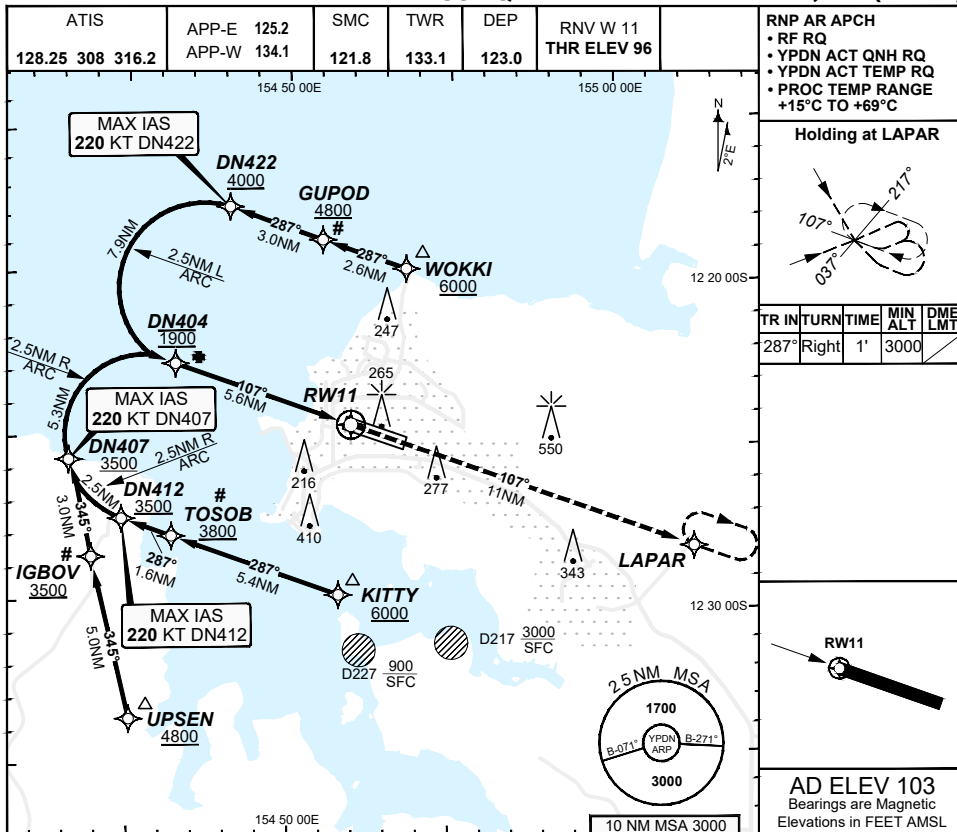


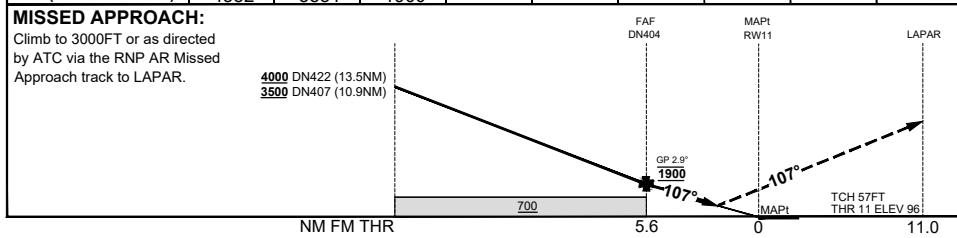
**FOR CASA APPROVED
OPERATORS ONLY
USE QNH**

**RNP W RWY 11 (AR)
DARWIN, NT (YPDN)**

09 JUL 2026



	DN422	DN407	DN404				
ALT (2.9° APCH PATH)	4332	3531	1900				



CATEGORY	A	B	C	D
RNP (0.30)			DA(H) 436 (340 - 1.9)	DA(H) 436 (340 - 1.9)
CIRCLING	N/A		NOT AUTHORISED	NOT AUTHORISED
ALTERNATE				

- NOTES**
- PAPI not coincident with VPA.
 - RNP 0.3 RQ FROM WOKKI TO DN404.
 - RNP 0.3 RQ FROM UPSEN TO DN404.
 - RNP 0.3 RQ FROM KITTY TO DN404.
 - MIN MAP GRAD 4.3% TO 3000FT per ATC.
 - 6#. Latest Intercept Point (LIP)

202602171107 General Electric Company Proprietary & Confidential Information

Changes: Editorial.

PDNGN18-187

DO NOT USE FOR NAVIGATION

Prepared by GE Aerospace - ICAO Doc 9905 Compliant

© Airservices Australia

