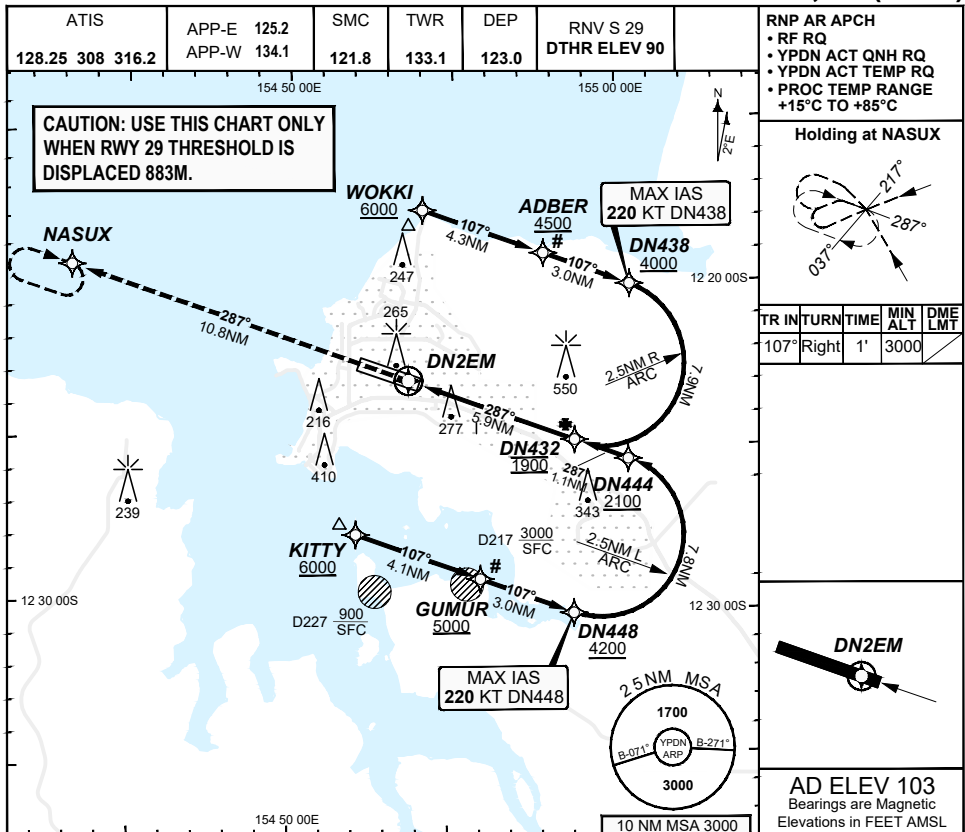


**FOR CASA APPROVED  
OPERATORS ONLY  
USE QNH**

RNP S RWY 29 (AR)  
**DARWIN, NT (YPDN)**

**09 JUL 2026**

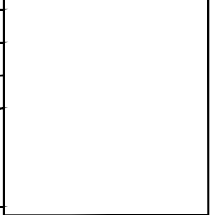


**RNP AR APCH**

- RF RQ
- YPDN ACT QNH RQ
- YPDN ACT TEMP RQ
- PROC TEMP RANGE +15°C TO +85°C

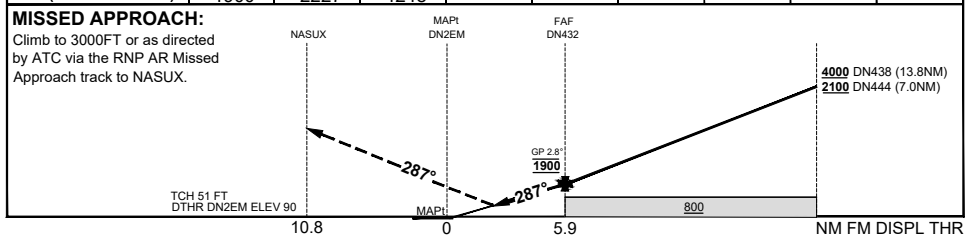
**Holding at NASUX**

TR IN	TURN	TIME	MIN ALT	DME LME
107°	Right	1'	3000	



**AD ELEV 103**  
Bearings are Magnetic  
Elevations in FEET AMSL

ALT (2.8° APCH PATH)	DN432	DN444	DN438
	1900	2227	4248



CATEGORY	A	B	C	D
RNP (0.30)			DA(H) 436 (346 - 2.0)	DA(H) 436 (346 - 2.0)
CIRCLING		N/A	NOT AUTHORISED	NOT AUTHORISED
ALTERNATE				

- NOTES**
1. PAPI not coincident with VPA.
  2. RNP 0.3 RQ FROM WOKKI TO DN432.
  3. RNP 0.3 RQ FROM KITTY TO DN432.
  4. MIN MAP GRAD 4.3% TO 3000FT per ATC.
  - 5#. Latest Intercept Point (LIP)

202602171102 General Electric Company Proprietary & Confidential Information

Changes: Editorial.

PDNGN17-187

**DO NOT USE FOR NAVIGATION**

Prepared by GE Aerospace - ICAO Doc 9905 Compliant

