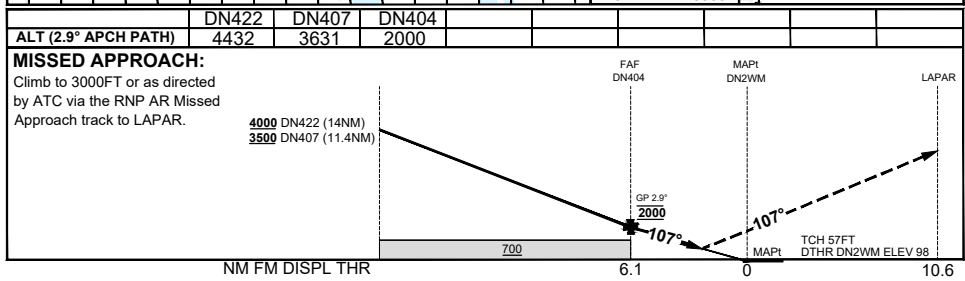
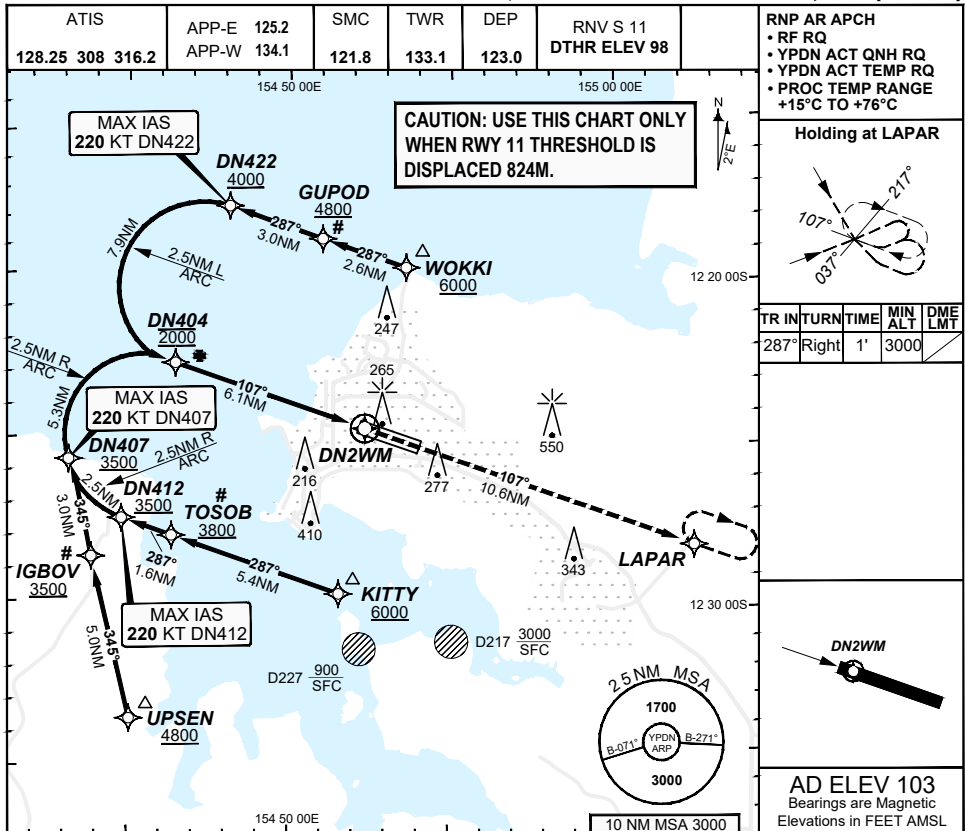


**FOR CASA APPROVED
OPERATORS ONLY
USE QNH**

**RNP S RWY 11 (AR)
DARWIN, NT (YPDN)**

09 JUL 2026



- NOTES**
1. PAPI not coincident with VPA.
 2. RNP 0.3 RQ FROM WOKKI TO DN404.
 3. RNP 0.3 RQ FROM UPSEN TO DN404.
 4. RNP 0.3 RQ FROM KITTY TO DN404.
 5. MIN MAP GRAD 4.5% TO 3000FT per ATC.
 - 6#. Latest Intercept Point (LIP)

202602171057 General Electric Company Proprietary & Confidential Information

Changes: Editorial.

PDNGN16-187

DO NOT USE FOR NAVIGATION

Prepared by GE Aerospace - ICAO Doc 9905 Compliant

© Airservices Australia

