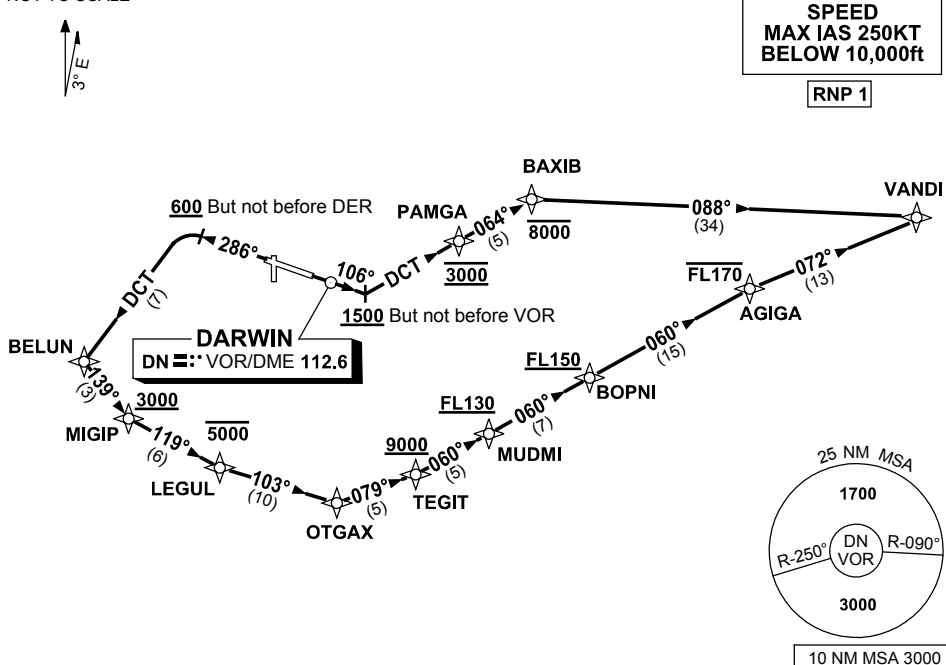


STANDARD INSTRUMENT DEPARTURES (SID) VANDI EIGHT DEPARTURE (NON-JET) (RNAV) DARWIN, NT (YPDN)

12 JUN 2025

| | | | | | |
|-----------------------------|--------------|--------------|--------------|----------------------------|--|
| ATIS 128.25 308 316.2 | ACD 126.8 | SMC 121.8 | TWR 133.1 | APP-E 125.2 APP-W 134.1 | Bearings are Magnetic Elevations in FEET AMSL |
|-----------------------------|--------------|--------------|--------------|----------------------------|--|

NOT TO SCALE



VANDI EIGHT DEPARTURE

RWY 11

- GRAD 3.3%
- Track 106°
- AT or ABV 1500ft, but not before VOR
turn LEFT, track DCT to PAMGA
Cross PAMGA AT 3000ft
- Track 064° to BAXIB
Cross BAXIB AT or BLW 8000ft
- Turn RIGHT, track 088° to VANDI

RWY 29

- GRAD 3.3% (GRAD 7% to 3000ft)
- Track 286°
- AT or ABV 600ft, but not before DER,
turn LEFT track DCT to BELUN
- Turn LEFT, track 139° to MIGIP
Cross MIGIP AT or ABV 3000ft
- Turn LEFT, track 119° to LEGUL
Cross LEGUL AT or BLW 5000ft
- Turn LEFT, track 103° to OTGAX
- Turn LEFT, track 079° to TEGIT
Cross TEGIT AT or ABV 9000ft
- Turn LEFT, track 060° to MUDMI
Cross MUDMI AT or ABV FL130
- Track 060° to BOPNI
Cross BOPNI AT or ABV FL150
- Track 060° to AGIGA
Cross AGIGA AT or BLW FL170
- Turn RIGHT, track 072° to VANDI

Changes: MUDMI AND BOPNI WPT, PAMGA TO BAXIB COURSE.

PDNDP10-183