

STANDARD INSTRUMENT DEPARTURES (SID)  
 RUSKA SIX DEPARTURE (NON-JET) (RNAV)  
**DARWIN, NT (YPDN)**

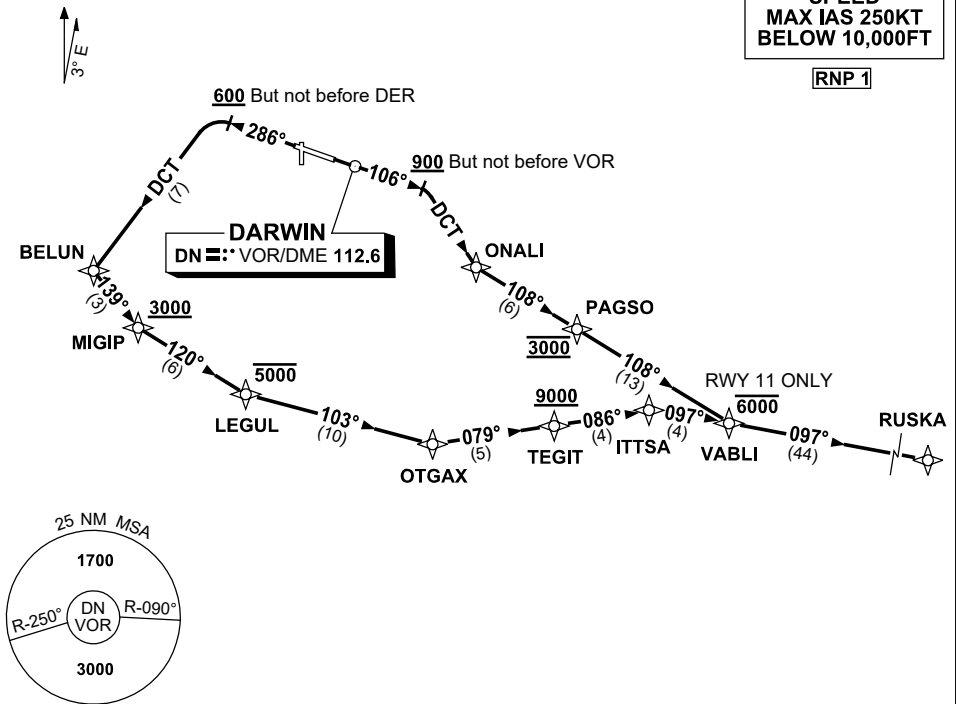
1 DEC 2022

ATIS 128.25 308 316.2	ACD 126.8	SMC 121.8	TWR 133.1	APP-E 125.2 APP-W 134.1	Bearings are Magnetic Elevations in FEET AMSL
-----------------------------	--------------	--------------	--------------	----------------------------	--

NOT TO SCALE

**SPEED  
 MAX IAS 250KT  
 BELOW 10,000FT**

**RNP 1**



10 NM MSA 3000

**RUSKA SIX DEPARTURE**

**RWY 11**

GRAD 3.3%

- Track 106°
- AT or ABV 900ft, but not before VOR turn RIGHT, track DCT to ONALI
- Turn LEFT, track 108° to PAGSO  
**Cross** PAGSO AT 3000ft
- Track 108° to VABLI  
**Cross** VABLI AT or BLW 6000ft
- Turn LEFT, track 097° to RUSKA

**RWY 29**

GRAD 3.3% (GRAD 7% to 3000ft)

- Track 286°
- AT or ABV 600ft, but not before DER turn LEFT, track DCT to BELUN
- Turn LEFT, track 139° to MIGIP  
**Cross** MIGIP AT or ABV 3000ft
- Turn LEFT, track 120° to LEGUL  
**Cross** LEGUL AT or BLW 5000ft
- Turn LEFT, track 103° to OTGAX
- Turn LEFT, track 079° to TEGIT  
**Cross** TEGIT AT or ABV 9000ft
- Turn RIGHT, track 086° to ITTSA
- Turn RIGHT, track 097° to VABLI
- Track 097° to RUSKA

Changes: MAG VAR.

PDNDP09-173