

STANDARD INSTRUMENT DEPARTURES (SID)  
LAKUP FIVE DEPARTURE (NON-JET) (RNAV)  
**DARWIN, NT (YPDN)**

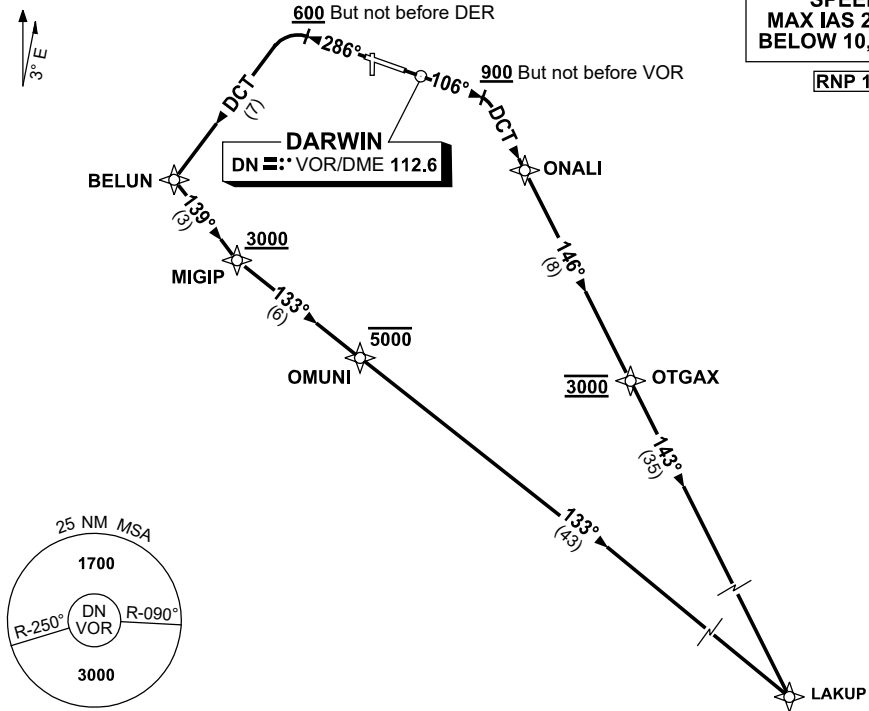
1 DEC 2022

ATIS 128.25 308 316.2	ACD 126.8	SMC 121.8	TWR 133.1	APP-E 125.2 APP-W 134.1	Bearings are Magnetic Elevations in FEET AMSL
-----------------------------	--------------	--------------	--------------	----------------------------	--

NOT TO SCALE

**SPEED  
MAX IAS 250KT  
BELOW 10,000FT**

**RNP 1**



**LAKUP FIVE DEPARTURE**

**RWY 11**

- GRAD 3.3%
- Track 106°
- AT or ABV 900ft, but not before VOR  
turn RIGHT, track DCT to ONALI
- Track 146° to OTGAX  
**Cross** OTGAX AT 3000ft
- Track 143° to LAKUP

**RWY 29**

- GRAD 3.3% (GRAD 7% to 3000ft)
- Track 286°
- AT or ABV 600ft, but not before DER  
turn LEFT, track DCT to BELUN
- Turn LEFT, track 139° to MIGIP  
**Cross** MIGIP AT or ABV 3000ft
- Turn LEFT, track 133° to OMUNI  
**Cross** OMUNI AT or BLW 5000ft
- Track 133° to LAKUP

Changes: MAG VAR.

PDNDP06-173