

STANDARD INSTRUMENT DEPARTURES (SID)
JULIE FIVE DEPARTURE (JET) (RNAV)
DARWIN, NT (YPDN)

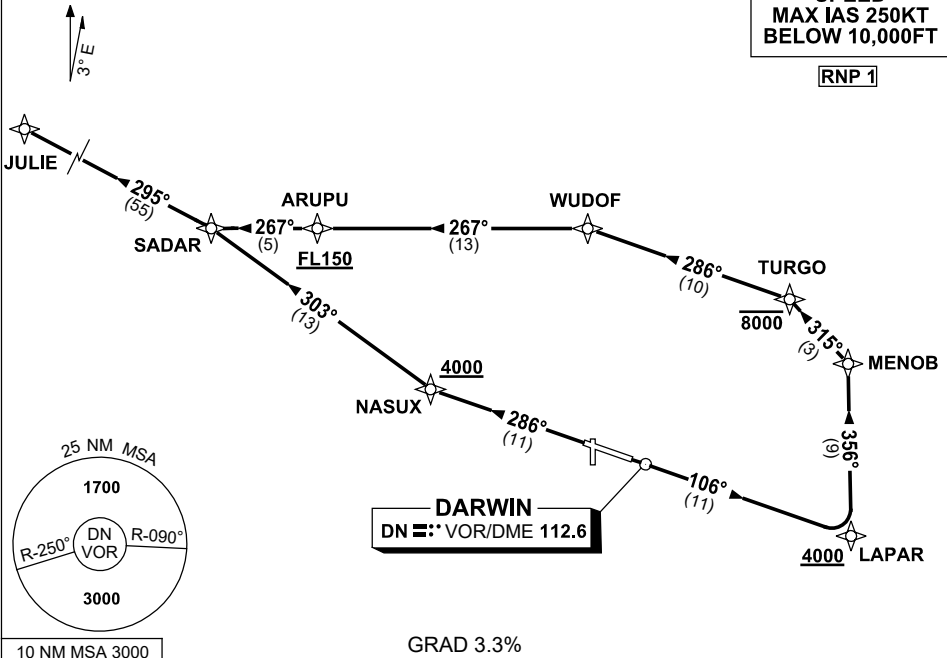
1 DEC 2022

| | | | | | |
|-----------------------------|--------------|--------------|--------------|----------------------------|--|
| ATIS 128.25 308 316.2 | ACD 126.8 | SMC 121.8 | TWR 133.1 | APP-E 125.2 APP-W 134.1 | Bearings are Magnetic Elevations in FEET AMSL |
|-----------------------------|--------------|--------------|--------------|----------------------------|--|

NOT TO SCALE

**SPEED
MAX IAS 250KT
BELOW 10,000FT**

RNP 1



JULIE FIVE DEPARTURE

RWY 11

- Track 106° to LAPAR
Cross LAPAR AT or ABV 4000ft
- Turn LEFT, track 356° to MENOB
- Turn LEFT, track 315° to TURGO
Cross TURGO AT or BLW 8000ft
- Turn LEFT, track 286° to WUDOF
- Turn LEFT track 267° to ARUPU
Cross ARUPU AT or ABV FL150
- Track 267° to SADAR
- Turn RIGHT, track 295° to JULIE

RWY 29

- Track 286° to NASUX
Cross NASUX AT or ABV 4000ft
- Turn RIGHT, track 303° SADAR
- Turn LEFT, track 295° to JULIE

Changes: MAG VAR.

PDNDP04-173