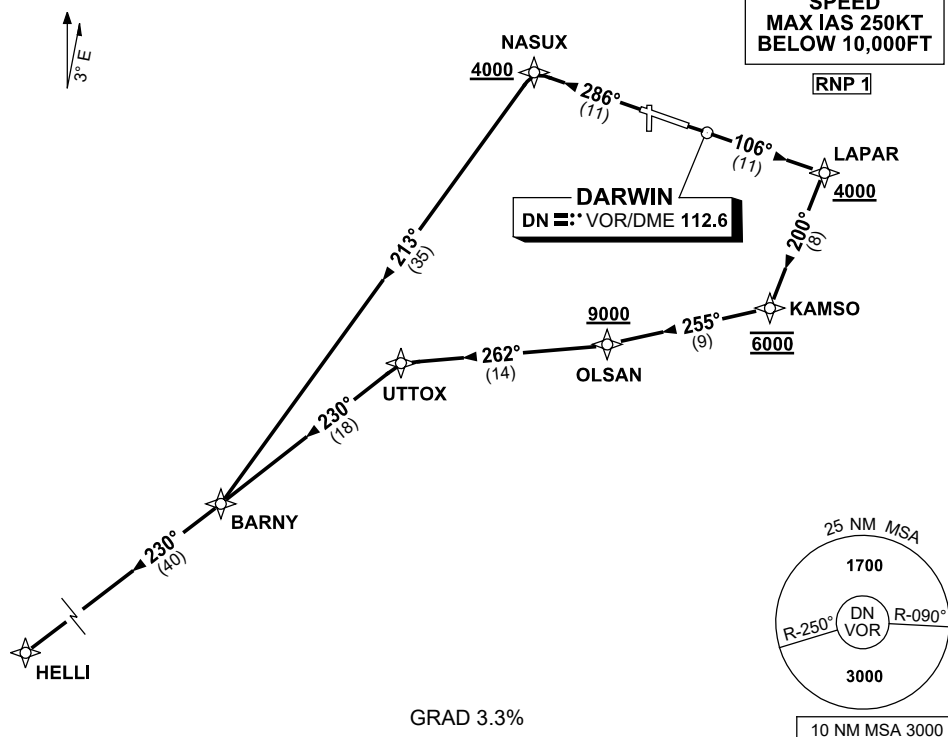


STANDARD INSTRUMENT DEPARTURES (SID) HELLI FIVE DEPARTURE (JET) (RNAV) DARWIN, NT (YPDN)

1 DEC 2022

ATIS 128.25 308 316.2	ACD 126.8	SMC 121.8	TWR 133.1	APP-E 125.2 APP-W 134.1	Bearings are Magnetic Elevations in FEET AMSL
-----------------------------	--------------	--------------	--------------	----------------------------	--

NOT TO SCALE



HELLI FIVE DEPARTURE

RWY 11

- Track 106° to LAPAR
 Cross LAPAR AT or ABV 4000ft
- Turn RIGHT, track 200° to KAMSO
 Cross KAMSO AT 6000ft
- Turn RIGHT, track 255° to OLSAN
 Cross OLSAN AT or ABV 9000ft
- Turn RIGHT, track 262° to UTTOX
- Turn LEFT, track 230° to BARNY
- Track 230° to HELLI

RWY 29

- Track 286° to NASUX
 Cross NASUX AT or ABV 4000ft
- Turn LEFT, track 213° to BARNY
- Turn RIGHT, track 230° to HELLI

Changes: MAG VAR.

PDNDP03-173