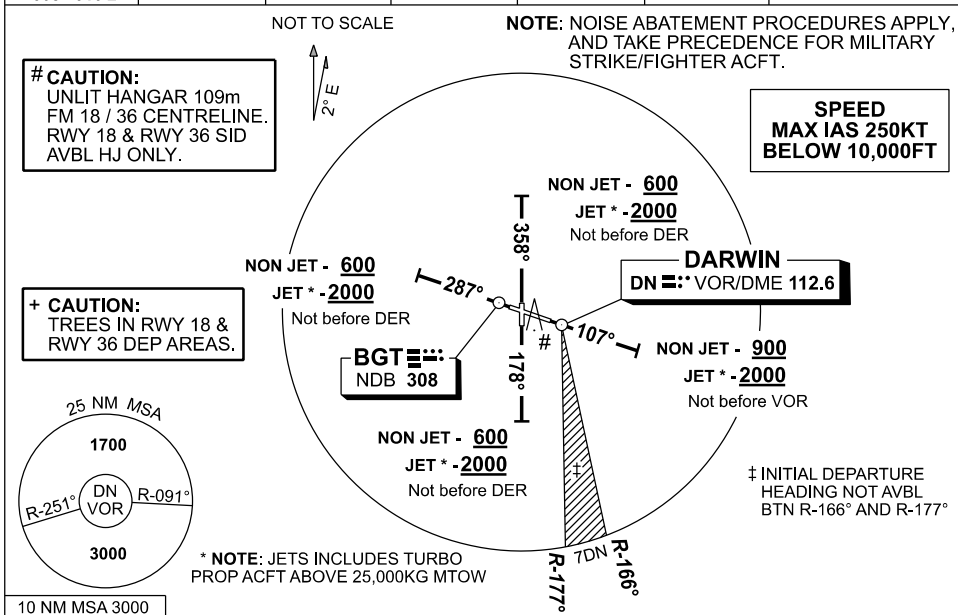


# STANDARD INSTRUMENT DEPARTURES (SID) DARWIN EIGHT DEPARTURE (RADAR) DARWIN, NT (YPDN)

19 MAR 2026

ATIS 128.25 308 316.2	ACD 126.8	SMC 121.8	TWR 133.1	APP-E 125.2 APP-W 134.1	DEP 123.0	Bearings are Magnetic Elevations in FEET AMSL
-----------------------------	--------------	--------------	--------------	----------------------------	--------------	--------------------------------------------------



## DARWIN EIGHT DEPARTURE (RADAR)

### RWY 11:

- GRAD 5.0% to 300ft then 3.3%
- Track 107°
- AT or ABV 900ft (2000ft JET ACFT \*) but not before VOR, turn to assigned heading or track
- When instructed, contact Approach for Radar Vectors

### RWY 18 (HJ ONLY):

- # TAKEOFF MINIMA REQUIREMENTS  
CEILING 50ft VIS 1000m  
or  
AIP ENR 1.5 Para 4.3  
WHICHEVER IS GREATER  
GRAD 3.3%
- Track 178°
  - AT or ABV 600ft (2000ft JET ACFT \*) but not before DER, turn to assigned heading or track
  - When instructed, contact Approach for Radar Vectors

### RWY 29:

- GRAD 3.3%
- Track 287°
- AT or ABV 600ft (2000ft JET ACFT \*) but not before DER, turn to assigned heading or track
- When instructed, contact Approach for Radar Vectors

### RWY 36 (HJ ONLY):

- # TAKEOFF MINIMA REQUIREMENTS  
CEILING 50ft VIS 700m  
or  
AIP ENR 1.5 Para 4.3  
WHICHEVER IS GREATER  
GRAD 3.3%
- Track 358°
  - AT or ABV 600ft (2000ft JET ACFT \*) but not before DER, turn to assigned heading or track
  - When instructed, contact Approach for Radar Vectors

## COMMUNICATIONS FAILURE PROCEDURE

On recognition of communication failure

- Squawk 7600
- Maintain last assigned vector for two minutes, and
- CLIMB IF NECESSARY TO MINIMUM SAFE ALTITUDE, to maintain terrain clearance, then
- proceed in accordance with the latest ATC route clearance acknowledged.

Changes: MAG VAR, GRAD.

PDNDP01-186