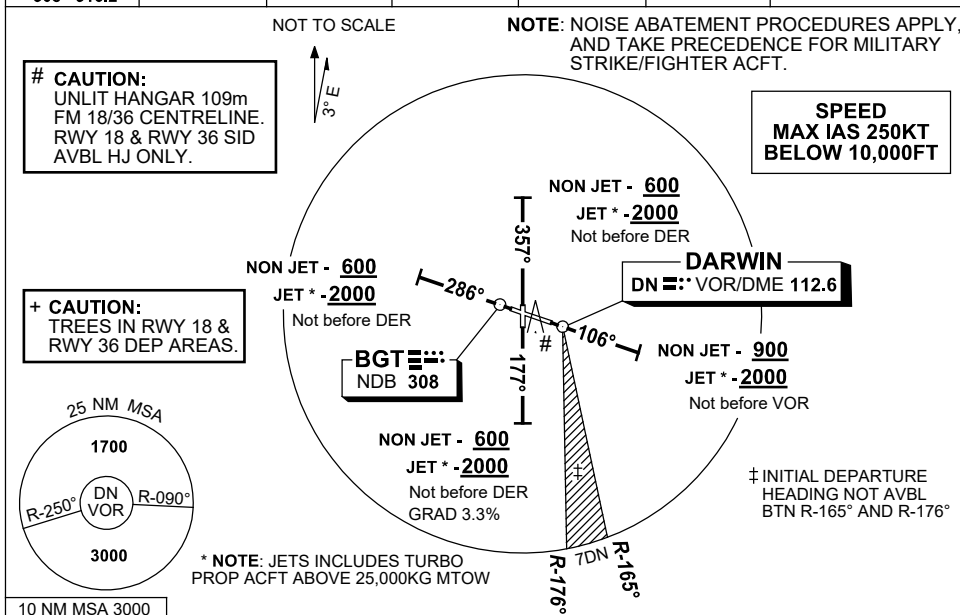


# STANDARD INSTRUMENT DEPARTURES (SID) DARWIN SEVEN DEPARTURE (RADAR) DARWIN, NT (YPDN)

1 DEC 2022

ATIS 128.25 308 316.2	ACD 126.8	SMC 121.8	TWR 133.1	APP-E 125.2 APP-W 134.1	DEP 123.0	Bearings are Magnetic Elevations in FEET AMSL
-----------------------------	--------------	--------------	--------------	----------------------------	--------------	--



## DARWIN SEVEN DEPARTURE (RADAR)

### RWY 11

- Track 106°
- AT or ABV 900ft (**2000ft JET ACFT \***) but not before VOR, turn to assigned heading or track
- When instructed, contact Approach for Radar Vectors

### RWY 18 (HJ ONLY)

- # TAKEOFF MINIMA REQUIREMENTS  
**CEILING 50ft VIS 1000m**  
or  
**AIP ENR 1.5 Para 4.3  
WHICHEVER IS GREATER**
- Track 177°
  - AT or ABV 600ft (**2000ft JET ACFT \***) but not before DER, turn to assigned heading or track
  - When instructed, contact Approach for Radar Vectors

### RWY 29

- Track 286°
- AT or ABV 600ft (**2000ft JET ACFT \***) but not before DER, turn to assigned heading or track
- When instructed, contact Approach for Radar Vectors

### RWY 36 (HJ ONLY)

- # TAKEOFF MINIMA REQUIREMENTS  
**CEILING 50ft VIS 700m**  
or  
**AIP ENR 1.5 Para 4.3  
WHICHEVER IS GREATER**
- Track 357°
  - AT or ABV 600ft (**2000ft JET ACFT \***) but not before DER, turn to assigned heading or track
  - When instructed, contact Approach for Radar Vectors

## COMMUNICATIONS FAILURE PROCEDURE

On recognition of communication failure

- Squawk 7600
- Maintain last assigned vector for two minutes, and
- CLIMB IF NECESSARY TO MINIMUM SAFE ALTITUDE, to maintain terrain clearance, then
- proceed in accordance with the latest ATC route clearance acknowledged.

Changes: MAG VAR.

PDNDP01-173