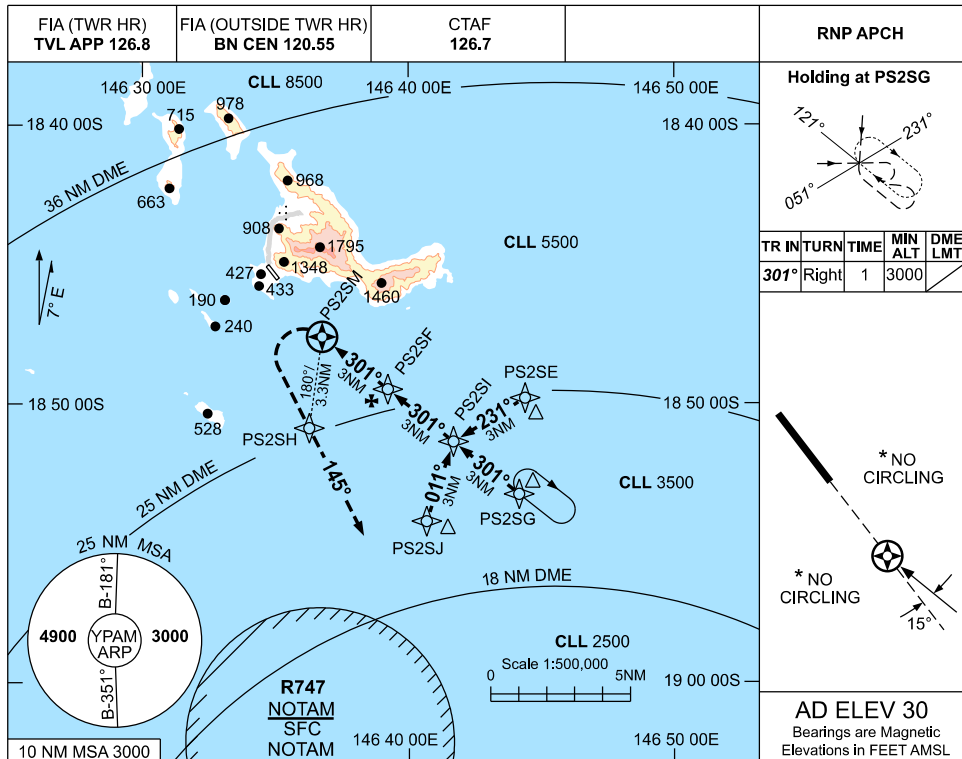


USE QNH

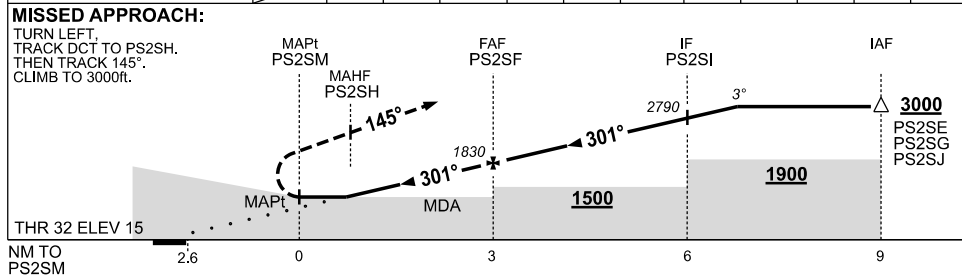
RNP Y RWY 32

09 JUL 2026

PALM ISLAND, QLD (YPAM)



NM TO NEXT WPT	PS2SM	1	2	PS2SF	1	2	PS2SI	0.7			
ALT (3° APCH PATH)		1200	1520	1830	2150	2470	2790	3000			



NOTES

- * 1. NO CIRCLING OR VAA-H AVBL.
- 2. COLOUR: SEE SPEC NOTICES.

CATEGORY	H
LNAV	870 (855-5.0)
CIRCLING *	NOT APPLICABLE
ALTERNATE	NOT APPLICABLE

Changes: RWY 32 THR ELEV, LNAV MINIMA, Editorial.

PAMGN03-187