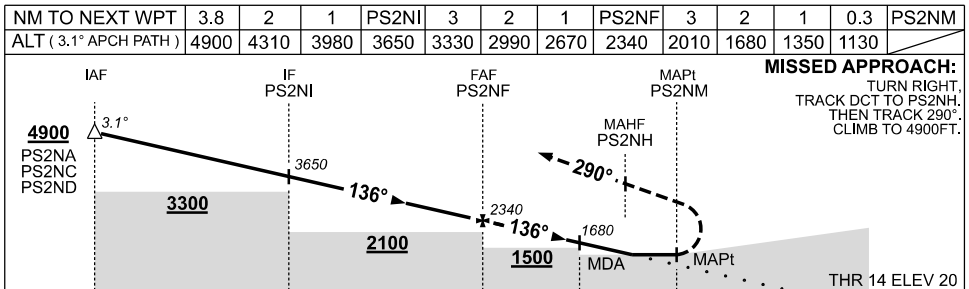
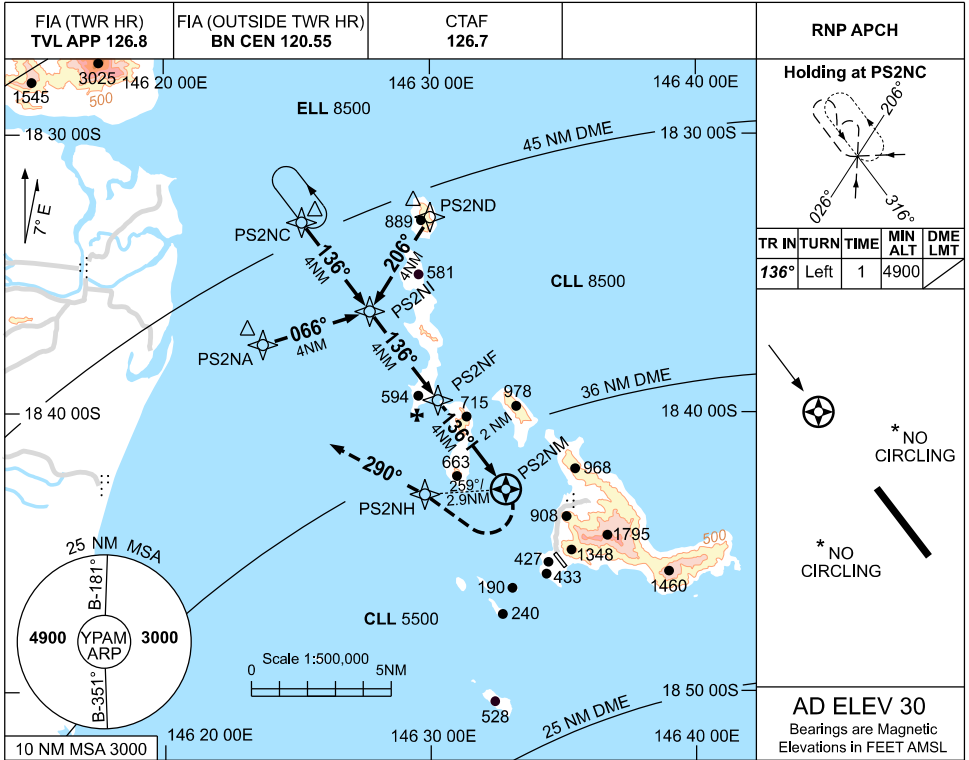


USE QNH

RNP RWY 14

09 JUL 2026

PALM ISLAND, QLD (YPAM)



	NM TO PS2NM	12	8	4	2	0	2.9
--	-------------	----	---	---	---	---	-----

CATEGORY	A	B	C	D
LNAV	1130 (1110-5.0)		NOT APPLICABLE	
CIRCLING*	NOT AUTHORISED			
ALTERNATE	NOT APPLICABLE			

NOTES

- MAX IAS: MAP TURN: 130KT.
- * NO CIRCLING
- COLOUR: SEE SPEC NOTICES.
- HOLD AND MISSED APCH OVERLAP WITH YIGM RNP E, ACFT SEPARATION NOT ASSURED.

Changes: MAGNETIC TRACKS.

PAMGN01-187