

**STANDARD INSTRUMENT ARRIVAL (STAR)
INTOG ONE X-RAY ARRIVAL (RNAV)
ADELAIDE, SA (YPAD)**

28 NOV 2024

| | | | | |
|---------------------|--------------|--------------|--------------|--|
| ATIS 116.4 134.5 | APP 118.2 | TWR 120.5 | SMC 121.7 | Bearings are Magnetic Elevations in FEET AMSL |
|---------------------|--------------|--------------|--------------|--|

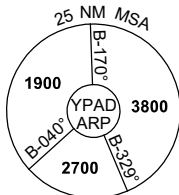
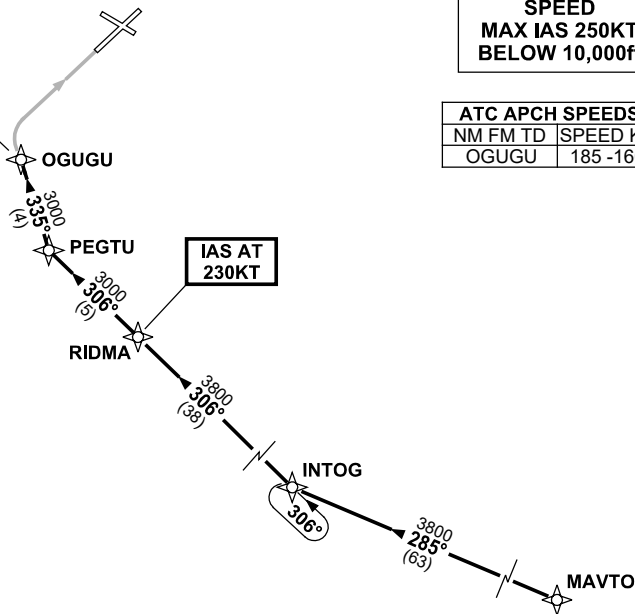
NOT TO SCALE



**MAX IAS
185KT**

**SPEED
MAX IAS 250KT
BELOW 10,000ft**

| ATC APCH SPEEDS | |
|-----------------|----------------|
| NM | FM TD SPEED KT |
| OGUGU | 185 -160 |



10 NM MSA 3800

TRANSITION:

MAVTO: From MAVTO track 285° to INTOG
Then follow ARRIVAL instructions

ARRIVAL: INTOG ONE

RWY 05 XRAY:

- From INTOG turn RIGHT, track 306° to RIDMA
IAS AT 230KT from RIDMA
- Track 306° to PEGTU
- Turn RIGHT, track 335° to OGUGU
MAX IAS 185KT from OGUGU
- Track via RNP X RWY 05 (AR)

**COMMUNICATIONS FAILURE: PROCEDURE IN IMC
IF ABLE CTC AD APP 03-9235-2012**

- Squawk 7600, comply with vertical navigation requirements, but not below MSA.
- Track via the latest STAR clearance to the nominated runway, then fly the most suitable approach in accordance with ERSA EMERG Section 1.5.

Changes: WAYPOINT NAMES, PROC IDENT.

PADSR33-181