

STANDARD INSTRUMENT ARRIVAL (STAR)  
DRINA ONE VICTOR ARRIVAL (RNAV)  
**ADELAIDE, SA (YPAD)**

28 NOV 2024

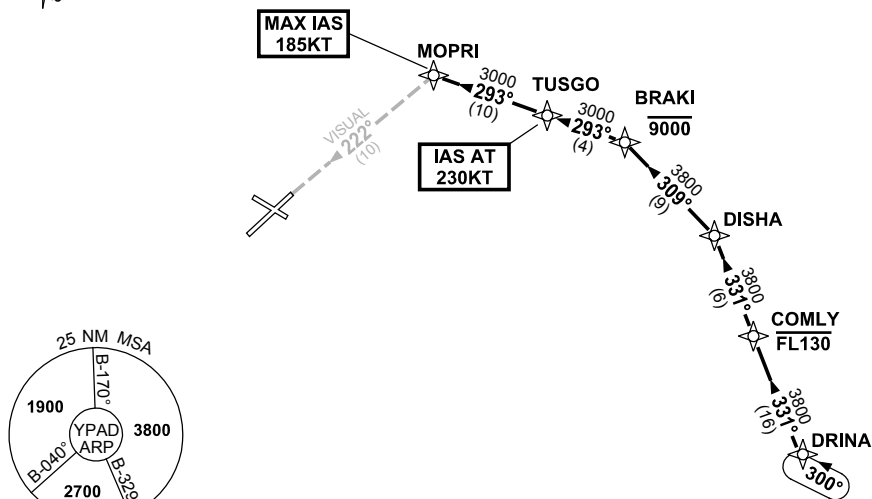
ATIS 116.4 134.5	APP 118.2	TWR 120.5	SMC 121.7	Bearings are Magnetic Elevations in FEET AMSL
---------------------	--------------	--------------	--------------	--

NOT TO SCALE



ATC APCH SPEEDS		
NM	FM	TD
MOPRI	185	160
5	160	150

**SPEED**  
**MAX IAS 250KT**  
**BELOW 10,000ft**



10 NM MSA 3800

**ARRIVAL: DRINA ONE**

**RWY 23 VICTOR:**

- From DRINA track 331° to COMLY  
**Cross** COMLY AT or BLW FL130
- Track 331° to DISHA
- Turn LEFT, track 309° to BRAKI  
**Cross** BRAKI AT or BLW 9000ft
- Turn LEFT, track 293° to TUSGO  
**IAS AT 230KT** from TUSGO
- Track 293° to MOPRI  
MAX IAS 185KT from MOPRI
- Turn LEFT, intercept VISUAL final RWY 23

**COMMUNICATIONS FAILURE: PROCEDURE IN IMC**  
**IF ABLE CTC AD APP 03-9235-2012**

- Squawk 7600, comply with vertical navigation requirements, but not below MSA.
- Track via the latest STAR clearance to the nominated runway, then fly the most suitable approach in accordance with ERSA EMERG Section 1.5.

Changes: VALIDITY INDICATOR, Editorial.

PADSR28-181