

STANDARD INSTRUMENT ARRIVAL (STAR)
KAKLU ONE X-RAY ARRIVAL (RNAV)
ADELAIDE, SA (YPAD)

28 NOV 2024

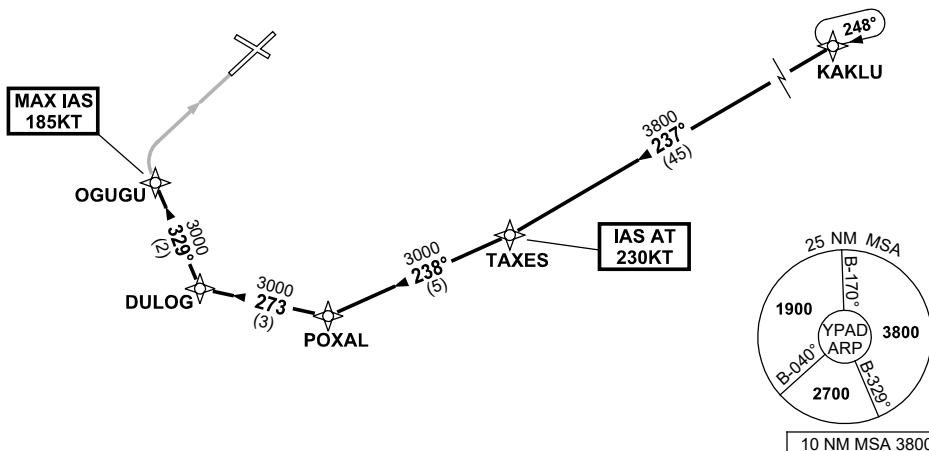
ATIS 116.4 134.5	APP (SE) 118.2	TWR 120.5	Bearings are Magnetic Elevations in FEET AMSL
---------------------	-------------------	--------------	--

NOT TO SCALE



ATC APCH SPEEDS		
NM	FM	TD
OGUGU	185	160

SPEED
MAX IAS 250KT
BELOW 10,000ft



ARRIVAL: KAKLU ONE

RWY 05 XRAY:

- From KAKLU track 237° to TAXES
IAS AT 230KT from TAXES
- Track 238° to POXAL
- Turn RIGHT, track 273° to DULOG
- Turn RIGHT, track 329° to OGUGU
MAX IAS 185KT from OGUGU
- Track via RNP X RWY 05 (AR)

COMMUNICATIONS FAILURE: PROCEDURE IN IMC
IF ABLE CTC AD APP 03-9235-2012

- Squawk 7600, comply with vertical navigation requirements, but not below MSA.
- Track via the latest STAR clearance to the nominated runway, then fly the most suitable approach in accordance with ERSa EMERG Section 1.5.

Changes: WAYPOINT NAMES, PROC IDENT.

PADSR24-181