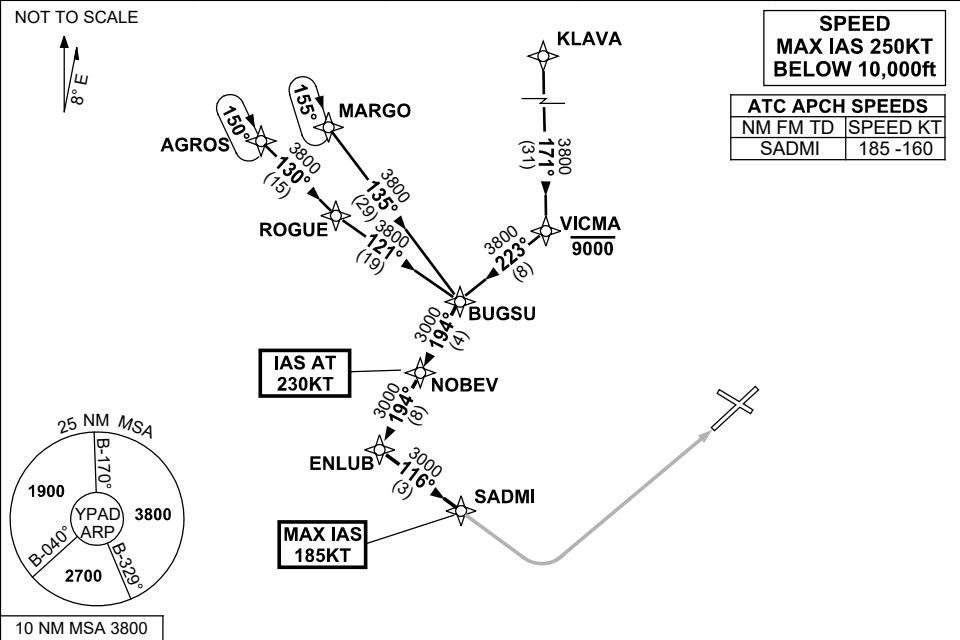


STANDARD INSTRUMENT ARRIVAL (STAR)
BUGSU ONE WHISKEY ARRIVAL (RNAV)
ADELAIDE, SA (YPAD)

28 NOV 2024

ATIS 116.4 134.5	APP 124.2	TWR 120.5	SMC 121.7	Bearings are Magnetic Elevations in FEET AMSL
---------------------	--------------	--------------	--------------	--



TRANSITIONS:	
MARGO:	From MARGO to BUGSU: Track 135° to BUGSU Then follow ARRIVAL instructions
KLAVA:	From KLAVA to BUGSU: Track 171° to VICMA Cross VICMA AT or BLW 9000FT Turn RIGHT, track 223° to BUGSU Then follow ARRIVAL instructions
AGROS:	From AGROS to BUGSU: Track 130° to ROGUE Turn LEFT, track 121° to BUGSU Then follow ARRIVAL instructions

ARRIVAL: BUGSU ONE	
RWY 05 WHISKEY:	
<ul style="list-style-type: none">From BUGSU turn RIGHT, track 194° to NOBEV IAS AT 230KT from NOBEVTrack 194° to ENLUBFrom ENLUB turn LEFT, track 116° to SADMI MAX IAS 185KT from SADMITrack via RNP W RWY 05 (AR)	

COMMUNICATIONS FAILURE: PROCEDURE IN IMC IF ABLE CTC AD APP 03-9235-2012	
<ul style="list-style-type: none">Squawk 7600, comply with vertical navigation requirements, but not below MSA.Track via the latest STAR clearance to the nominated runway, then fly the most suitable approach in accordance with ERSA EMERG Section 1.5.	