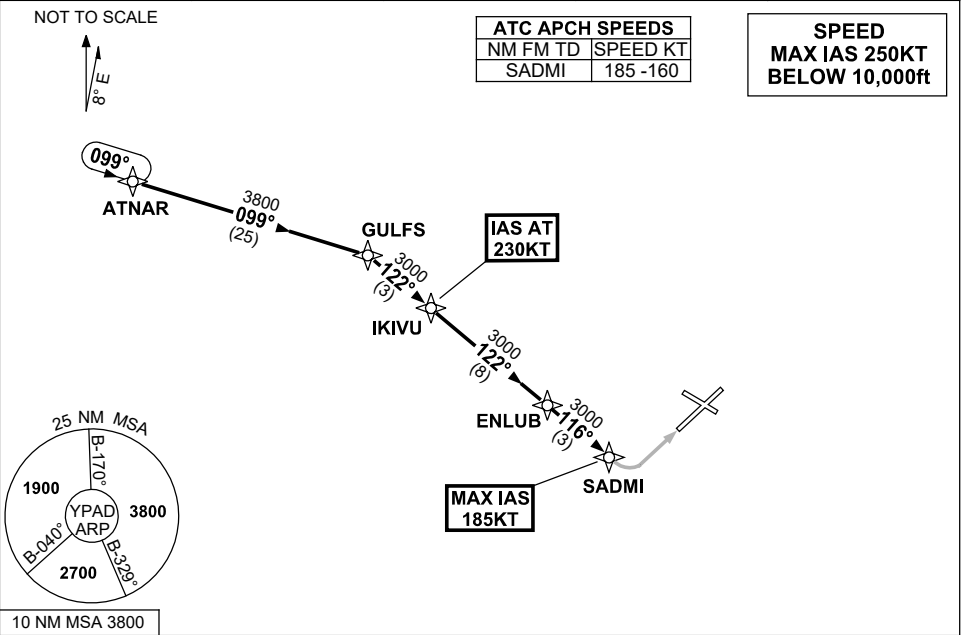


STANDARD INSTRUMENT ARRIVAL (STAR)
ATNAR ONE WHISKEY ARRIVALS (RNAV)
ADELAIDE, SA (YPAD)

28 NOV 2024

ATIS 116.4 134.5	APP 124.2	TWR 120.5	SMC 121.7	Bearings are Magnetic Elevations in FEET AMSL
---------------------	--------------	--------------	--------------	--



ARRIVAL: ATNAR ONE

RWY 05 WHISKEY:

- Track 099° to GULFS
- Turn RIGHT, track 122° to IKIVU
- IAS AT 230KT from IKIVU
- Track 122° to ENLUB
- From ENLUB turn LEFT track 116° to SADMI
- MAX IAS 185KT from SADMI
- Track via RNP W RWY 05 (AR)

COMMUNICATIONS FAILURE: PROCEDURE IN IMC
IF ABLE CTC AD APP 03-9235-2012

- Squawk 7600, comply with vertical navigation requirements, but not below MSA.
- Track via the latest STAR clearance to the nominated runway, then fly the most suitable approach in accordance with ERS A EMERG Section 1.5.

Changes: WAYPOINT NAMES, PROC IDENT.

PADSR18-181